



ECOSOC

Economic and Social Council

COMMISSION ON THE STATUS OF WOMEN (CSW)

The principal global intergovernmental policy-making body on gender equality and the empowerment of women.

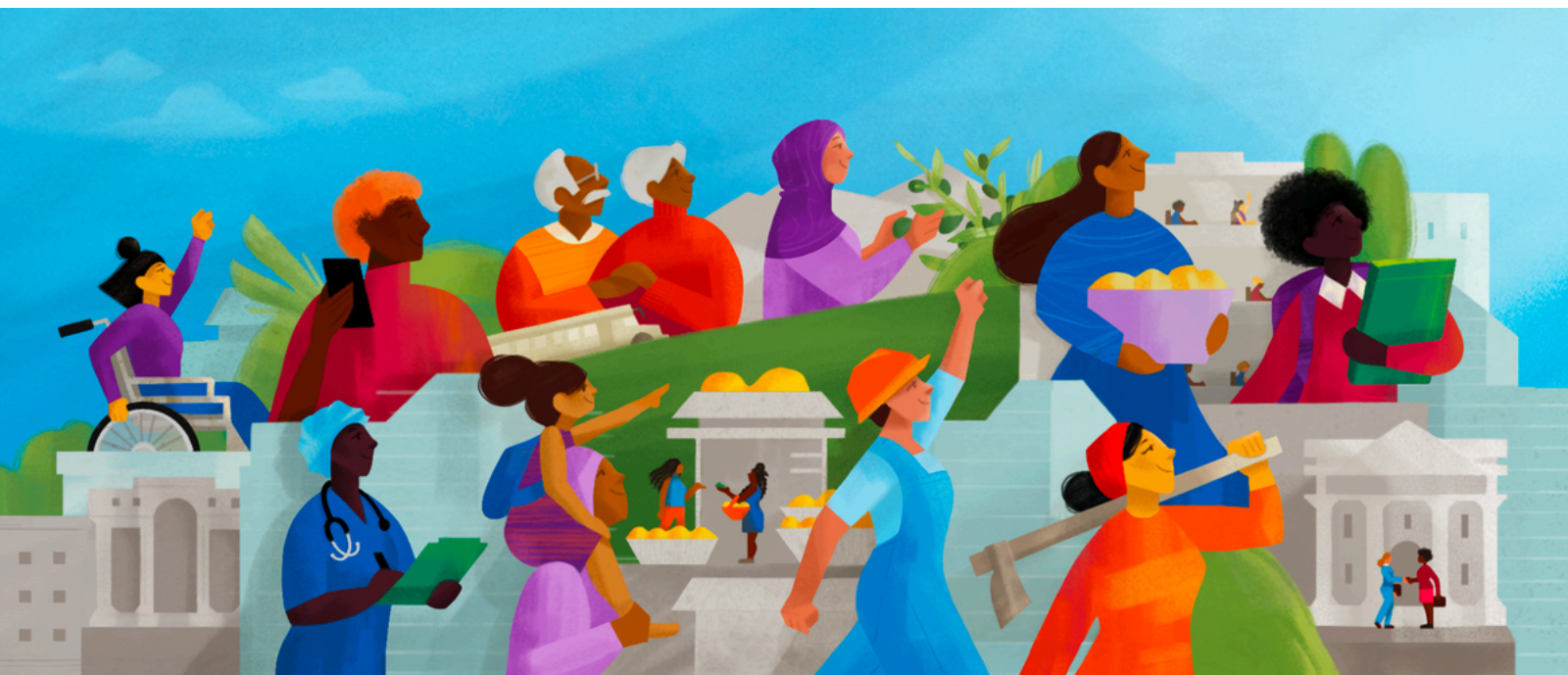


- Implementation of and follow up to the Beijing Declaration and Platform for Action
- Gender-responsive implementation of the 2030 Agenda for Sustainable Development
- Priority and review themes established in multi-year programme of work 2021-2024



.....

CSW68 PRIORITY THEME, MARCH 2024: ACCELERATING THE ACHIEVEMENT OF GENDER EQUALITY AND THE EMPOWERMENT OF ALL WOMEN AND GIRLS BY ADDRESSING POVERTY AND STRENGTHENING INSTITUTIONS AND FINANCING WITH A GENDER PERSPECTIVE



In its Agreed Conclusions, CSW recommended Governments and other relevant stakeholders to take the following actions, as applicable:

- Integrate a gender perspective into financing for development commitments
- Implement gender-responsive economic and social policies and strengthen public institutions
- Expand fiscal space for investments to end poverty for women and girls
- Foster new development strategies towards sustainable economies and sustainable societies
- Engage and finance women's organizations and collectives
- Enhance multidimensional poverty data and statistics

CSW69/Beijing +30 (2025)

BEIJING
+30



IN 2025, THE GLOBAL COMMUNITY WILL MARK THE THIRTIETH ANNIVERSARY OF THE FOURTH WORLD CONFERENCE ON WOMEN AND ADOPTION OF THE BEIJING DECLARATION AND PLATFORM FOR ACTION (1995).

ACCESS MORE INFORMATION ON SUBSIDIARY BODIES

<https://www.un.org/ecosoc/en/content/ecosoc-subsiary-bodies>