

UNITED NATIONS  
ECONOMIC  
AND  
SOCIAL COUNCIL



Distr.  
GENERAL

E/CN.3/405  
25 November 1969

ORIGINAL: ENGLISH

STATISTICAL COMMISSION  
Sixteenth session  
Item 12 of the provisional agenda

DRAFT RECOMMENDATIONS

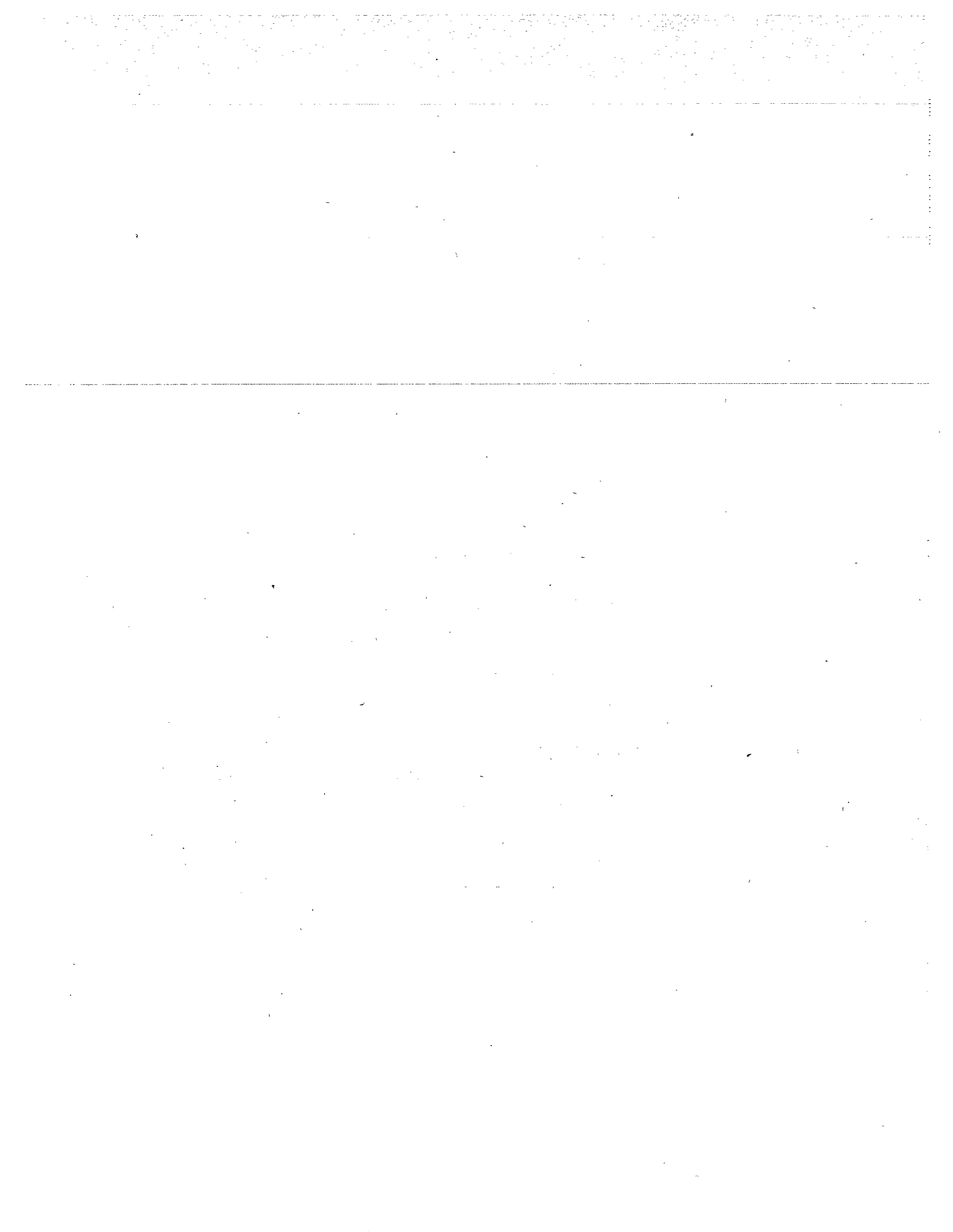
FOR THE

1973 WORLD PROGRAMME OF INDUSTRIAL STATISTICS

PART II. LIST OF PRODUCTS AND MATERIALS

Report of the Secretary-General

1. The attached document (ST/STAT/45) has been prepared in response to a request by the Commission at its fifteenth session. It constitutes the second (Part II) in a series of three documents intended to define the objectives of the 1973 World Programme of Industrial Statistics and to indicate appropriate methods for carrying out the related inquiries in each country. Parts I and III in the series (E/CN.3/404 and E/CN.3/406) deal respectively with the general statistical objectives of the Programme and the organization and conduct of the national inquiries.
2. The three documents in the series were distributed to countries and interested regional and international agencies for comments. Summaries of the comments received and of the proposals of the Secretary-General for the preparation of definitive editions of the documents are before the Commission as E/CN.3/404/Add.1, E/CN.3/405/Add.1 and E/CN.3/406/Add.1.



UNITED NATIONS

SECRETARIAT



Distr.  
LIMITED

ST/STAT/45  
25 November 1969

ORIGINAL: ENGLISH

---

STATISTICAL OFFICE OF THE  
UNITED NATIONS

DRAFT RECOMMENDATIONS

FOR THE

1973 WORLD PROGRAMME OF INDUSTRIAL STATISTICS

PART II. LIST OF PRODUCTS AND MATERIALS

CONTENTS

	<u>Paragraphs</u>
I. INTRODUCTION . . . . .	1 - 15
General remarks . . . . .	1
Nature of list . . . . .	2 - 3
Sources . . . . .	4
Criteria for selection, ordering and coding . . . . .	5 - 8
Scope and coverage of reported data . . . . .	9
Concepts of production and consumption . . . . .	10 - 11
Units of measurement . . . . .	12 - 13
Problem of double-counting . . . . .	14
Dimensions and use of list . . . . .	15
II. LIST OF PRODUCTS AND MATERIALS	
III. ADDENDUM	

## I. INTRODUCTION

### General remarks

1. The list of products and materials included in this paper is designed to be used in the 1973 World Programme of Industrial Statistics as a guide in reporting information on the production and consumption of individual commodities. The object of the list is to improve the international comparability of the information reported by each country and at the same time to establish a basic array of data for use in the analysis of national patterns of industrial output and input and in the development of regional and world aggregates of production and consumption. For this reason, the list is regarded as an important supplement to the general recommendations on the content of the 1973 inquiries given in document ST/STAT/44: General Statistical Objectives of the 1973 World Programme of Industrial Statistics.

### Nature of list

2. The list is not intended to take the place of a comprehensive classification of products or materials. Such a classification is available at the international level in the Standard International Trade Classification (SITC) <sup>1/</sup> and this classification will ultimately be supplemented by the general ISIC-based commodity classification now in preparation by the United Nations Statistical Office. The articulation of the items of the present list within the framework of a general commodity classification has been undertaken with respect to the SITC and will be developed at a later date with respect to the new ISIC-based scheme. General recommendations on the use of national and international commodity classifications in reporting commodity detail in the 1973 inquiries are included in document ST/STAT/44.

3. The list is likely to be too limited to form the basis for the detail required at the national level in the 1973 inquiries. It should, however, provide minimum specifications for this work and a satisfactory standard for the international reporting of data for the year. Subsequently, it may

---

<sup>1/</sup> United Nations publication, Sales No.: 61.XVII.6.

serve as an acceptable standard for international reporting on an annual basis.

#### Sources

4. The selection of commodities is largely based on the list currently used by the United Nations Statistical Office in its questionnaire on Industrial Commodity Production Statistics. This list has been expanded and supplemented on the basis of the experience obtained in its use and the comments received from countries since its introduction, and also on the basis of proposals for its revision made by FAO and other agencies engaged in the ~~compilation of special types of commodity data.~~ The Working Group on Industrial Statistics of the Conference of European Statisticians has contributed significantly to its development.<sup>2/</sup>

#### Criteria for selection, ordering and coding

5. The current or prospective importance of the commodity in the international economy has normally been the main criterion for inclusion in the list. At the same time, considerations of balance within the industrial sector and of the "representativeness" of the commodity in terms of a specified group of commodities have been taken into account. An attempt has also been made to deal with commodities which were essentially homogeneous in terms of both the quantitative characteristics used in their measurement and their unit values.

6. Commodities which are principal products of a specified ISIC industry group are placed together in the list, and the commodity groups thus formed are ordered according to the sequence of the industry groups in the revised ISIC classification<sup>3/</sup>. Within each of the commodity groups, the items are ordered either in a strictly alphabetical manner, or according to the nature of the processing involved or their end use. The order within commodity groups is not, however, considered important at this stage; in the definitive edition of the list, a more systematic procedure will be adopted.

---

<sup>2/</sup> See Report of the session held 25-29 November 1968 (Conf.Eur.Stats/WG.13/38; 11 December 1968).

<sup>3/</sup> International Standard Industrial Classification of All Economic Activities (Statistical Papers, Series M, No. 4, Rev. 2), United Nations publication, Sales No.: 68.XVII.8.

7. The primary coding of the commodities is in terms of the ISIC industry groups of which the commodities are principal products. The first four digits of the six-digit number relate to the pertinent ISIC industry group and the remaining two digits to the serial order of the item within the commodity group. Where two or more units of measurement are recommended, the series are differentiated by the use of capital letters A, B ... following the basic code.

8. The items in the list are also coded in terms of their positions in the SITC. In this case, also, a six-digit code number is used, the first five digits being the code number of the most closely related SITC item and the sixth digit indicating whether the item is the equivalent of the SITC item (use of zero in sixth place) or only part of it (use of 1, 2 ... in sixth place). Where the item in the list corresponds to more than one SITC item, a plus sign is added to the code number given by the use of the first SITC reference. A further indication of the SITC equivalent in such cases is normally given in the commodity description accompanying each item.

#### Scope and coverage of reported data

9. The data to be reported on the commodities in the list should refer to the production and consumption of these commodities by all establishments included in the 1973 inquiry. In principle, this should mean the inclusion of the production and consumption of the commodities by all establishments, irrespective of size, which are engaged primarily in mining, manufacturing and the supply of electricity, gas and water (ISIC Major Divisions 2, 3 and 4) and the exclusion of the production and consumption of the commodities by all non-industrial establishments. In practice, some modifications in this position may be warranted for the purpose of international comparisons: in reporting national totals on the production side, for example, the estimated production of non-industrial establishments should be included as a memorandum item wherever such production is important.

#### Concepts of production and consumption

10. Once the industrial sector is defined, the production and consumption of individual commodities within the sector should be measured essentially in terms of the concepts of total production and total consumption. This

procedure is desirable not only to provide the most meaningful measures of production and consumption but also to minimize the effects of differences from country to country in the identification and classification of establishments. It means that production should be defined to include both the total output of the commodity by establishments producing the commodity either as a primary or secondary product and the total output of establishments producing the commodity only as an intermediate product. Similarly, consumption should be defined to include both the total consumption of establishments which consume the commodity wholly or partly from purchased supplies and the consumption of establishments which consume the commodity only from intermediate production.

11. In practice, some modifications will have to be made in the application of these concepts. In addition to special treatment for the smaller establishments and the general need for cut-off limits in the reporting of minor amounts of production, it will normally be impracticable to ask for the enumeration in the required detail of all secondary production and all intermediate production, even in the case of the larger establishments. Moreover, some countries may wish to enumerate only such measures of production as production for shipment, actual shipments or sales. In these circumstances, attention will have to be given to an evaluation of the importance of the deviations from the basic concept and to the development in some instances of more appropriate estimates, possibly with the help of supplementary sources of information. Similar considerations will frequently apply in the measurement of consumption. A discussion of some of the more important modifications which may be required in practice will be found in document ST/STAT/44.

#### Units of measurement

12. For the purposes of the international comparison of the results which is envisaged, it is important that the production and consumption of each commodity should be measured in uniform quantitative terms. A basic part of the list which follows is, accordingly, the specification of standard quantitative units of measurement for each item. These are based as far as possible on existing international recommendations for measurements of this kind. In some cases, more than one unit of measurement is prescribed in order to provide a better statement of the dimensions or other characteristics of the commodity. Where necessary, conversion of the reported information



to the standard units should normally be undertaken at the national level, either on the basis of the available information on the relationship involved or on the basis of a special inquiry into this relationship.

13. Measurement of total production and consumption in terms of value is considered to be of secondary importance for the World Programme. Not only is a considerable element of total production or consumption in each country not subject to valuation in any substantive sense but, even where values can be readily reported, international comparison and aggregation are rendered difficult by the general lack of uniformity in the basis of valuation and by the absence of satisfactory factors for currency conversion. Recommendations will be found in document ST/STAT/44 for the valuation of that part of production and consumption which can be identified as output or input of the establishment and, more generally, for the reporting and presentation of value data on products and materials, both at the establishment level and at the national level.

#### Problem of double-counting

14. The problem of double-counting may arise at the national level because of the inclusion in the measure of production or consumption of elements of the production or consumption of the same product or material at different stages of processing. This is likely to be of importance in those cases where minor processing activities are carried on in different establishments, and the resulting differences in the characteristics of the product or material are not reflected in separate entries in the list. In such cases, it is normally recommended that production or consumption should be measured at one specified stage of processing, normally the most important stage. The solutions proposed here are considered interim solutions, since the production or consumption taking place at other stages of processing can only be measured properly by the inclusion of the pertinent products or materials in sufficient detail in the list.

#### Dimensions and use of list

15. The combined list of products and materials is made up of 650 separate items. Of these, 70 items relate to materials of non-industrial origin and the remaining 580 items to products or materials of industrial origin. These

include 65 minerals. For convenience in use, the complete list in the final version will be presented in three forms: (1) according to the basic ISIC order as in the present document; (2) according to SITC order; and (3) alphabetically, according to the names of the commodities. Recommendations on how these lists should be used in reporting at the establishment level and in making up the final national tabulations are given in document ST/STAT/44.

II. LIST OF PRODUCTS AND MATERIALS

ISIC-based code	Commodity	SITC-based code	ISIC-based code	Commodity	SITC-based code
I. Products of Agriculture, Forestry and Fisheries			I. Products of Agriculture, Forestry and Fisheries (continued)		
1110-01A 1110-01B	<u>Cattle, live</u>	00110-1A 00110-1B	1110-16	<u>Wheat, unmilled</u>	04100-1
	Oxen, cows, bulls, yearling bulls, bullocks and steers, regardless of breed, counted and weighed at the slaughter-house. Excluding buffaloes and calves. Number of head and metric tons live weight.			Soft wheat and hard (including durum and semi-hard) wheat. Spelt (small brown grain) and meslin (a mixture of wheat and rye) are excluded. Metric tons.	
1110-02A 1110-02B	<u>Calves, live</u>	00110-2A 00110-2B	1110-17	<u>Cereals, other, unmilled</u>	04550-0
	Live calves counted and weighed at the slaughter-house. Excluding buffaloes. Number of head and metric tons live weight.			Includes such cereals as buckwheat, sorghum and millet. Metric tons.	
1110-03A 1110-03B	<u>Sheep, lambs and goats, live</u>	00120-0A 00120-0B	1110-18	<u>Beans, fresh or chilled</u>	05450-1
	Domestic or wild sheep (rams, ewes and lambs) and domestic or wild goats and kids, counted and weighed at the slaughter-house. Number of head and metric tons live weight.			Beans (whether or not in the shell), harvested green. Metric tons.	
1110-04A 1110-04B	<u>Hogs, live</u>	00130-0A 00130-0B	1110-19	<u>Cucumbers, fresh or chilled</u>	05450-3
	Domestic pigs and wild pigs, regardless of sex, age and breed, counted and weighed at the slaughter-house. Number of head and metric tons live weight.			Metric tons.	
1110-05	<u>Poultry, live</u>	00140-0	1110-20	<u>Onions, fresh or chilled</u>	05450-5
	Hens, ducks, geese, turkeys and other poultry. Metric tons live weight.			Metric tons.	
1110-06	<u>Milk, fresh</u>	02250-0	1110-21	<u>Peas, green, fresh or chilled</u>	05450-9
	Whole milk of cows, goats, sheep and buffaloes for processing and for the manufacture of butter, cheese, condensed and evaporated milk, and other whole milk products. Metric tons.			Green peas (whether or not in the shell), harvested green. Metric tons.	
1110-07A 1110-07B	<u>Eggs</u>	02500-0A 02500-0B	1110-22	<u>Tomatoes, fresh or chilled</u>	05440-0
	Eggs in shell, fresh or preserved. Metric tons in shell and number.			Metric tons.	
1110-08	<u>Wool, raw sheep's and lambs'</u>	26210-0	1110-23	<u>Vegetables, other, fresh or chilled</u>	05450-9
	Metric tons greasy basis.			Metric tons.	
1110-09	<u>Mohair, raw</u>	26230-1	1110-24	<u>Cassava</u>	05481-1
	Metric tons greasy basis.			Fresh cassava, including bitter and sweet (manioc). Metric tons.	
1110-10	<u>Silkworm cocoons, dried</u>	26110-0	1110-25	<u>Potatoes, fresh or chilled</u>	05410-1
	Silkworm cocoons suitable for reeling. Metric tons.			Sweet potatoes are excluded. Metric tons.	
1110-11	<u>Barley, unmilled</u>	04300-0	1110-26	<u>Potatoes, sweet and yams (fresh or chilled)</u>	05481-1
	Metric tons.			Metric tons.	
1110-12	<u>Maize (corn), unmilled</u>	04400-0	1110-27	<u>Apples, fresh or chilled</u>	05140-0
	All kinds of maize, regardless of colours or shapes. Metric tons.			Metric tons.	
1110-13	<u>Oats, unmilled</u>	04520-0	1110-28	<u>Apricots, fresh or chilled</u>	05193-0
	Grey (or black) oats and white (or yellow) oats. Metric tons.			Metric tons.	
1110-14	<u>Rice, unhusked</u>	04210-1	1110-29	<u>Bananas</u>	05130-1
	Rice in the husk (paddy or rough rice). Metric tons.			All fresh or chilled edible fruit of the genus <u>Musa</u> , excluding <u>Musa paradisiaca</u> (plantain). Metric tons.	
1110-15	<u>Rye, unmilled</u>	04510-0	1110-30	<u>Grapes, fresh or chilled</u>	05150-0
	Metric tons.			Metric tons.	
			1110-31	<u>Oranges, fresh or chilled</u>	05110-0
				Sweet or bitter oranges, tangerines, mandarins and Clementines. Metric tons.	

ISIC-based code	Commodity	SITC-based code	ISIC-based code	Commodity	SITC-based code
1. Products of Agriculture, Forestry and Fisheries (continued)			I. Products of Agriculture, Forestry and Fisheries (continued)		
110-42	<u>Citrus fruit, other, fresh or chilled</u>	05120-0	1110-50	<u>Oil-seeds, oil nuts and oil kernels, other</u>	22180-9
	Limes, lemons, grape-fruit, pomelos and other citrus fruit not specified elsewhere. Metric tons.			Metric tons.	
1110-53	<u>Peaches and nectarines, fresh or chilled</u>	05193-2	1110-51	<u>Coffee, green</u>	07110-1
	Changshu and freestone peaches and nectarines. Metric tons.			Raw green, clean coffee after the berry and skin have been removed. Metric tons.	
1110-54	<u>Pears, fresh or chilled</u>	05192-0	1110-52	<u>Cocoa beans, raw</u>	07210-1
	Metric tons.			Raw beans, fermented and dried, whole or broken. Metric tons.	
1110-55	<u>Plumcots, fresh or chilled</u>	05195-1	1110-53	<u>Tea, green</u>	07410-1
	Metric tons.			Plucked leaves delivered to the factory before withering. Metric tons.	
1110-56	<u>Strawberries, fresh or chilled</u>	05194-1	1110-54	<u>Hops, green</u>	05484-0
	Metric tons.			Fresh matured hop cones. Excluding lupulin. Metric tons.	
1110-57	<u>Fruit, other, fresh or chilled</u>	05199-0	1110-55	<u>Tobacco, unmanufactured</u>	12100-0
	Metric tons.			Farm sales weight of fresh tobacco leaves. Tobacco reported on dry weight basis should be converted to fresh tobacco equivalent using a ratio of 91 to 100. Metric tons.	
1110-58	<u>Sugar cane</u>	05482-1	1110-56	<u>Cotton, raw</u>	26310-0
	Metric tons.			Ginned cotton, excluding cottonseed, linters and mill waste; consumed in spinning mills and non-spinning uses (medical cotton, upholstery, wadding, etc.). Metric tons.	
1110-59	<u>Sugar beet</u>	05482-2	1110-57	<u>Flax fibre</u>	26510-1
	Metric tons.			Dried and scutched flax. Metric tons.	
1110-60	<u>Caster oil seed</u>	22170-0	1110-58	<u>Ramie fibre</u>	26530-1
	Metric tons.			Decorticated ramie. Metric tons.	
1110-61	<u>Copra</u>	22120-0	1110-59	<u>True hemp fibre</u>	26510-1
	Metric tons.			Scutched soft fibre obtained from the <u>cannabis sativa</u> plant. Metric tons.	
1110-62	<u>Cottonseed</u>	22160-0	1110-60	<u>Jute fibre</u>	26400-0
	Metric tons.			Retted and stripped jute fibre. Metric tons.	
1110-63	<u>Groundnuts (peanuts), green, whether or not shelled</u>	22110-1	1110-61	<u>Vegetable hard fibres</u>	26540-0+
	Metric tons shelled basis.			Hard fibres derived from the leaf tissue of the <u>Agave sisalana</u> (sisal), <u>Agave fourcroydes</u> (henequen), <u>Musa textilis</u> (abaca or manila), <u>Furcraea</u> (Mauritius hemp), <u>Phormium tenax</u> (New Zealand hemp) and <u>Agave contala</u> (Maguey). SITC 2654 and 2655. Metric tons.	
1110-64	<u>Linsed</u>	22150-0	1210-01	<u>Cork, natural</u>	24401-1
	Metric tons.			Natural cork in curved slabs as stripped from the cork tree, or merely surface scraped or otherwise cleaned. Metric tons.	
1110-65	<u>Pale nuts and kernels</u>	22130-0	1210-02	<u>Rubber, natural, latex</u>	23110-1
	Metric tons.			Commercial natural rubber latexes with a rubber content usually between 60 and 62 per cent. Metric tons dry solid content.	
1110-66	<u>Soybean seed</u>	22180-3	1210-03	<u>Rubber, natural, dry</u>	23110-3
	Metric tons.			Smoked sheets, pale crepes, brown crepes and other types of dry rubber. Metric tons.	
1110-67	<u>Soya beans</u>	22140-0			
	Metric tons.				
1110-68	<u>Soybean seed</u>	22180-5			
	Metric tons.				

ISIC-based code	Commodity	SITC-based code	ISIC-based code	Commodity	SITC-based code
I. Products of Agriculture, Forestry and Fisheries (continued)			II. Minerals (continued)		
1220-01	<u>Pulpwood (including broadleaved)</u>	24210-0	2200-01A 2200-01B	<u>Crude petroleum</u>	33101-1A 33101-1B
	Timber for pulp in the natural state as felled, usually with the branches lopped off, and such timber stripped of its bark (including the inner bark) or from which merely the rough protuberances have been removed. Cubic metres.			Liquid product obtained from oil wells and consisting predominantly of non-aromatic hydrocarbons (paraffinic, cyclic, etc.), provided that they have been subjected to no further processes other than those of decantation, dehydration or stabilization (removal of certain dissolved hydrocarbon gases for convenience of transport), or to which have been added only hydrocarbons previously recovered by physical methods during the course of the above-mentioned processes. Shale oils, natural gasoline (that is, the light spirit extracted from the natural gas associated with crude petroleum) and oils obtained from the distillation of hard coal, brown coal and their derivatives are excluded. Metric tons and cubic metres.	
1220-02	<u>Sawlogs and veneer logs, broadleaved</u>	24230-0	2200-02	<u>Shale oil</u>	33101-2
	Broadleaved timber in the natural state as felled, usually with the branches lopped off, and such timber stripped of its bark (including the inner bark) or from which merely the rough protuberances have been removed; trunks or sections of trunks of broadleaved trees, the round surfaces of which have been reduced to flat surfaces by means of axe or adze, or by coarse sawing, to form wood of roughly rectangular cross-section, parts of the bark often remaining at the corners. Logs for sleepers are included. Cubic metres.			Crude oil obtained from oil shale by destructive distillation. Metric tons.	
1220-03	<u>Sawlogs and veneer logs, coniferous</u>	24220-0	2200-03	<u>Natural gas</u>	34110-0
	Coniferous timber in the natural state as felled, usually with the branches lopped off, and such timber stripped of its bark (including the inner bark) or from which merely the rough protuberances have been removed; trunks or sections of trunks of coniferous trees, the round surfaces of which have been reduced to flat surfaces by means of axe or adze, or by coarse sawing, to form wood of roughly rectangular cross-section, parts of the bark often remaining at the corners. Logs for sleepers are included. Cubic metres.			Natural gas from underground sources (whether or not in association with crude petroleum), gas recovered from coal mines, and sewage gas measured at 15°C and standard sea-level atmospheric pressure (760 mm Hg). Production should be confined to gas of these types which is actually collected and used as fuel or raw material; it should therefore exclude gas used for re-pressuring and gas flared, vented or otherwise wasted, whether or not such gas has first been processed for the extraction of natural gasoline. Cubic metres.	
1301-01	<u>Fish, marine, fresh or chilled</u>	03110-1	2301-01	<u>Iron ore</u>	28130-1
	Fresh (live or dead) marine fishes (teleostean and cartilaginous) nominal catches, that is, the live weight equivalent of the fish and fish products landed; frozen fish is excluded. Metric tons.			Iron ores and concentrates as in related SITC item. Metric tons gross weight.	
1301-02	<u>Crustaceans, molluscs, fresh or chilled</u>	03110-1	2301-01M	<u>Iron-bearing ores</u>	28130-1M
	Fresh nominal catches, that is, the live weight of the crustaceans, molluscs and other invertebrates landed. Frozen crustaceans and molluscs are excluded. Metric tons.			Iron ores and concentrates as in 2301-01 and all other iron-bearing ores and concentrates intended for treatment for iron recovery. Metric tons Fe content.	
1302-01	<u>Fish, freshwater, fresh or chilled</u>	03110-3	2302-01	<u>Antimony ore</u>	28399-1
	Fresh nominal catches, that is, the live weight of freshwater and diadromous fishes. Frozen freshwater fish is excluded.			Antimony ores and concentrates as in related SITC item. Metric tons gross weight.	
II. Minerals			2302-01M	<u>Antimony-bearing ores</u>	28399-1M+
				Antimony ores and concentrates as in 2302-01 and all other antimony-bearing ores and concentrates intended for treatment for antimony recovery. Metric tons Sb content.	
2100-01	<u>Hard coal</u>	32140-0	2302-02	<u>Bauxite</u>	28330-0
	Anthracite, bituminous and semi-bituminous coal with a gross calorific value over 5 700 calories/gramme on the ash-free and moist basis. Fresh produced breeze, middlings and slurries are included. Production comprises the sum of sales, minus consumption, issues to miners and issues to coking, briquetting and other ancillary plants at mines. Metric tons.			Crude ore mined. Metric tons gross weight.	
2100-02	<u>Brown coal</u>	32160-0	2302-03	<u>Chromium ore</u>	28391-1
	Brown coal is a fuel intermediate between hard coal and peat. The dividing line between brown coal and hard coal is drawn on the basis of a gross calorific value of 5 700 calories/gramme on the moist, ash-free basis. Lignite, which is a variety of brown coal of a lower calorific value, is included. Metric tons.			Chromium ores and concentrates as in related SITC item. Metric tons gross weight.	
			2302-03M	<u>Chromium-bearing ores</u>	28391-1M
				Chromium ores and concentrates as in 2302-03 and all other chromium-bearing ores and concentrates intended for treatment for Cr <sub>2</sub> O <sub>3</sub> recovery. Metric tons Cr <sub>2</sub> O <sub>3</sub> content.	
			2302-04	<u>Cobalt ore</u>	28399-5
				Cobalt ores and concentrates as in related SITC item. Metric tons gross weight.	
			2302-04M	<u>Cobalt-bearing ores</u>	28399-3M+
				Cobalt ores and concentrates as in 2302-04 and all other cobalt-bearing ores and concentrates intended for treatment for cobalt recovery. Metric tons Co content.	

ISIC-based code	Commodity	SITC-based code
II. Minerals (continued)		
2302-05	<u>Copper ore</u>	28311-1
Copper ores and concentrates as in related SITC item. Metric tons gross weight.		
2302-05M	<u>Copper-bearing ores</u>	28311-1M+
Copper ores and concentrates as in 2302-05 and all other copper-bearing ores and concentrates intended for treatment for copper recovery. Metric tons Cu content.		
2302-06	<u>Gold ore</u>	
Gold ores and concentrates. Metric tons gross weight.		
2302-06M	<u>Gold-bearing ores</u>	
Gold ores and concentrates as in 2302-06 and all other gold-bearing ores and concentrates intended for treatment for gold recovery. Metric tons Au content.		
2302-07	<u>Lead ore</u>	28340-1
Lead ores and concentrates as in related SITC item. Metric tons gross weight.		
2302-07M	<u>Lead-bearing ores</u>	28340-1M+
Lead ores and concentrates as in 2302-07 and all other lead-bearing ores and concentrates intended for treatment for lead recovery. Metric tons Pb content.		
2302-08	<u>Manganese ore</u>	28370-1
Manganese ores and concentrates as in related SITC item. Metric tons gross weight.		
2302-08M	<u>Manganese-bearing ores</u>	28370-1M+
Manganese ores and concentrates as in 2302-08 and all other manganese-bearing ores and concentrates intended for treatment for manganese recovery. Metric tons Mn content.		
2302-09M	<u>Mercury</u>	28399-5M
Total Hg recovered from mercury-bearing ores and concentrates. Metric tons Hg recovered.		
2302-10	<u>Molybdenum ore</u>	28393-1
Molybdenum ores and concentrates as in related SITC item. Metric tons gross weight.		
2302-10M	<u>Molybdenum-bearing ores</u>	28393-1M
Molybdenum ores and concentrates as in 2302-10 and all other molybdenum-bearing ores and concentrates intended for treatment for molybdenum recovery. Metric tons Mo content.		
2302-11	<u>Nickel ore</u>	28321-1
Nickel ores and concentrates as in related SITC item. Metric tons gross weight.		
2302-11M	<u>Nickel-bearing ores</u>	28321-1M+
Nickel ores and concentrates as in 2302-11 and all other nickel-bearing ores and concentrates intended for treatment for nickel recovery. Metric tons Ni content.		
2302-12	<u>Platinum ore</u>	28501-1
Platinum ores and concentrates as in related SITC item. Metric tons gross weight.		
2302-12M	<u>Platinum-bearing ores</u>	28501-1M
Platinum ores and concentrates as in 2302-12 and all other platinum-bearing ores and concentrates intended for treatment for platinum recovery. Metric tons Pt content.		

ISIC-based code	Commodity	SITC-based code
II. Minerals (continued)		
2302-13	<u>Silver ore</u>	28501-3
Silver ores and concentrates as in related SITC item. Metric tons gross weight.		
2302-13M	<u>Silver-bearing ores</u>	28501-3M
Silver ores and concentrates as in 2302-13 and all other silver-bearing ores and concentrates intended for treatment for silver recovery. Metric tons Ag content.		
2302-14	<u>Thorium concentrates</u>	28600-1
Thorium concentrates as in related SITC item. Metric tons gross weight.		
2302-14M	<u>Thorium-bearing ores</u>	28600-1M+
Thorium concentrates as in 2302-14 and all other thorium-bearing ores and concentrates intended for ThO <sub>2</sub> recovery. Metric tons ThO <sub>2</sub> content.		
2302-15	<u>Tin concentrates</u>	28360-1
Tin concentrates as in related SITC item. Metric tons gross weight.		
2302-15M	<u>Tin-bearing ores</u>	28360-1M+
Tin concentrates as in 2302-15 and all other tin-bearing ores and concentrates intended for treatment for tin recovery. Metric tons Sn content.		
2302-16	<u>Tungsten concentrates</u>	28392-1
Tungsten concentrates as in related SITC item. Metric tons gross weight.		
2302-16M	<u>Tungsten-bearing ores</u>	28392-1M+
Tungsten concentrates as in 2302-16 and all tungsten-bearing ores and concentrates intended for treatment for WO <sub>3</sub> recovery. Metric tons WO <sub>3</sub> content.		
2302-17	<u>Uranium ore</u>	28393-3
Uranium ores and concentrates as in related SITC item. Metric tons gross weight.		
2302-17M	<u>Uranium-bearing ores</u>	28393-3M
Uranium ores and concentrates as in 2302-17 and all other uranium-bearing ores and concentrates intended for treatment for uranium recovery. Metric tons U content.		
2302-18	<u>Vanadium ore</u>	28393-5
Vanadium ores and concentrates as in related SITC item. Metric tons gross weight.		
2302-18M	<u>Vanadium-bearing ores</u>	28393-5M
Vanadium ores and concentrates as in 2302-18 and all other vanadium-bearing ores and concentrates intended for treatment for vanadium recovery. Metric tons V content.		
2302-19	<u>Zinc ore</u>	28350-1
Zinc ores and concentrates as in related SITC item. Metric tons gross weight.		
2302-19M	<u>Zinc-bearing ores</u>	28350-1M+
Zinc ores and concentrates as in 2302-19 and all other zinc-bearing ores and concentrates intended for treatment for zinc recovery. Metric tons Zn content.		
2901-01	<u>Chalk</u>	27091-0
Natural calcium carbonate. Phosphoric chalk, steatite and powder chalk prepared are excluded. Metric tons.		

ISIC-based code	Commodity	SITC-based code
-----------------	-----------	-----------------

II. Minerals (continued)

2901-02	<u>Clay</u>	27621-0
All natural crude clayey substances consisting of earth or rocks of sedimentation origin with basis of aluminium silicates such as kaolin, bentonite, andalusite, etc. Expanded clays are excluded. Metric tons.		
2901-03	<u>Granite, porphyry, sandstone, etc.</u>	27513-0
Monumental and building stones, including such stone not further worked than roughly split, roughly squared or squared by sawing, such as granite, porphyry, basalt, sandstone and other hard indigenous rocks. Metric tons.		
2901-04	<u>Gravel and crushed stone</u>	27540-0
Pebbles and crushed or broken stone, gravel, macadam and tarred macadam of a kind commonly used for concrete aggregates, for road metalling or for railway or other ballast. Flint and shingle are included. Metric tons.		
2901-05	<u>Limestone flux and calcareous stone</u>	27322-0
Limestone flux and limestone and other calcareous rocks commonly used for the manufacture of lime or cement, excluding building or monumental stone. These materials in powdered form for soil improvement are included. Dolomite and chalk are excluded. Metric tons.		
2901-06	<u>Magnesite</u>	27624-0
Natural magnesium carbonate, whether or not calcined; other than purified magnesium oxide. Metric tons.		
2901-07	<u>Marble, etc.</u>	27312-0
Marble, travertines, ecaussine and other similar hard calcareous monumental and building stone and alabaster, provided that their apparent specific gravity is 2.5 or more (that is, effective weight in kg/1 000 cm <sup>3</sup> ), presented in the mass or in form of blocks, slabs or sheets. Stones identifiable as mosaic cubes or as paving flagstones are excluded. Cubic metres.		
2901-08	<u>Sand, silica and quartz</u>	27330-1
Commercially-extracted sand used in building, in glass industry, for cleaning metals, etc. Metric tons.		
2901-09	<u>Slate</u>	27311-0
Slate including slate not further worked than roughly split, roughly squared or squared by sawing. Roofing slate and mosaic cubes are excluded. Metric tons.		
2902-01	<u>Guano</u>	27110-1
Natural animal fertilizer whether or not dehydrated but not chemically treated. Metric tons.		
2902-02	<u>Iron pyrites, unroasted</u>	27420-0
All unroasted iron pyrites and unroasted cupreous pyrites. Chalco-pyrite and gem marcasite are excluded. Metric tons.		
2902-03	<u>Phosphate rock</u>	27130-0
P <sub>2</sub> O <sub>5</sub> content of natural phosphate rock occurring as nodular phosphates, residual weathered phosphatic limestones, vein phosphates and consolidated and unconsolidated phosphatic sediments. Guano is excluded. Metric tons.		
2902-04	<u>Potash salts, crude</u>	27140-0
K <sub>2</sub> O content or equivalent of the various mined potash salts. Manufactured fertilizers are not included. Metric tons K <sub>2</sub> O content.		
2902-05	<u>Sulphur, native</u>	27410-1
Unrefined sulphur extracted by melting or otherwise from mineral sulphur occurring in the free state. Sulphur obtained from Frasch-process mines is included. Sublimed sulphur, precipitated sulphur and colloidal sulphur are excluded. Metric tons.		

ISIC-based code	Commodity	SITC-based code
-----------------	-----------	-----------------

II. Minerals (continued)

2903-01	<u>Salt, unrefined</u>	27630-1
Sodium chloride or common salt (NaCl), irrespective of the source from which it is obtained and the degree of purity or concentration. Refined salt, salt liquors and sea water are excluded. Metric tons.		
2909-01	<u>Abrasives, natural</u>	27523-0
Pumice stone, emery, natural corundum and other natural abrasives (rotten stone). Precious or semi-precious stone dust or powder is excluded. Metric tons.		
2909-02	<u>Asbestos</u>	27640-0
Crude, washed or ground asbestos. Metric tons.		
2909-03	<u>Diamonds, gem</u>	66720-1
Mine and alluvial production of rough, uncut and unpolished diamonds intended for gem stones. Metric carats.		
2909-04	<u>Diamonds, industrial</u>	27510-0+
Mine and alluvial production of rough, uncut and unpolished diamonds for industrial uses. Industrial diamonds comprise all stones the colour, size and texture of which do not permit their use as jewellery, for example, board, carbonado, etc. Diamonds in the form of grit or powder are included. Metric carats.		
2909-05	<u>Graphite, natural</u>	27622-0
Natural graphite (plumbago or black lead) regardless of carbon content. Metric tons.		
2909-06	<u>Mica, crude</u>	27652-0
Mica crystals (muscovite, phlogopite, biotite, etc.) of irregular shape, size and thickness. Metric tons.		
2909-07	<u>Peat</u>	32170-1
Peat is the first stage in the metamorphosis of vegetable matter to coal. It has a high percentage of moisture and a gross calorific value of 3 700 to 4 000 calories/gramme. Peat briquettes are excluded. Metric tons.		

III. Manufactures

3111-01	<u>Beef and veal, fresh</u>	01110-0
Fresh, chilled or frozen meat of bovine animals, irrespective of the origin of the animals, expressed in carcass weight, excluding edible offals, tallow and lard. Metric tons.		
3111-02	<u>Mutton and lamb, fresh</u>	01120-0
Fresh, chilled or frozen meat of sheep, lambs, goats and kids, irrespective of the origin of the animals, in carcass weight, excluding edible offals, tallow and lard. Metric tons.		
3111-03	<u>Pork, fresh</u>	01130-0
Fresh, chilled or frozen meat of swine, irrespective of the origin of the animals, in terms of carcass weight, excluding edible offals, tallow and lard. Bacon and ham are not included. Metric tons.		
3111-04	<u>Poultry, fresh</u>	01140-0
Fresh, chilled or frozen meat of fowls, ducks, geese, turkeys and guinea fowls and edible offals thereof, except liver. Metric tons.		

ISIC-based code	Commodity	SITC-based code
III. Manufactures (continued)		
3111-05	<u>Other meat, fresh</u>	01150-0+
Fresh, chilled or frozen meat of other animals, irrespective of the origin of the animals, in carcass weight, excluding edible offals, tallow and lard. Metric tons.		
3111-06	<u>Meat, cured, smoked and salted</u>	01200-0
Meat and edible meat offals, except poultry liver and unrendered pig and poultry fat, salted, in brine, dried or smoked. Meat and offals cooked, prepared or preserved by other processes, hams enclosed in sausage casings and meat flours and meals suitable only for feeding animals are excluded. Metric tons.		
3111-07	<u>Meat, tinned</u>	01380-1
Meat and meat products (other than meat extracts, soups and broths), packed and heat-processed in hermetically-sealed containers. Tinned meat, preparations such as sausages and meat paste are excluded. Metric tons net weight.		
3111-08	<u>Sausages</u>	01340-0
Sausages and the like (meat paste) made of meat offal or animal blood, whether or not tinned. Metric tons.		
3111-09	<u>Meals, frozen prepared</u>	01380-2
More than one food arranged on a shaped container, so as to constitute the main element of a meal, such as mixed frozen dinners and frozen pies of beef, pork and poultry. Metric tons.		
3111-10	<u>Lard</u>	09130-1
Lard and other rendered pig fat, crude or refined. Metric tons.		
3111-11	<u>Hides, cattle and horse, undressed</u>	21110-0
Raw hides of bovines and equines, from which the hair has not been removed, in terms of fresh weight. Metric tons.		
3111-12	<u>Skins, calf, goat and sheep, undressed</u>	21120-0+
Raw skins of calves, sheep and goats from which the hair has not been removed, in terms of fresh weight. SITC 2112, 2114, 2116 and 2117. Metric tons.		
3112-01	<u>Milk and cream, condensed</u>	02210-0
Milk and cream (including buttermilk, skim milk and whey), evaporated or condensed (in liquid or semi-solid form). Metric tons net weight.		
3112-02	<u>Milk and cream, dried</u>	02220-0
Milk and cream (including buttermilk, skim milk and whey), dry (in solid form, such as blocks or powder). Metric tons.		
3112-03	<u>Butter</u>	02300-0
Natural fresh butter, whether salted or not, including melted. Metric tons.		
3112-04	<u>Cheese</u>	02400-1
Cheese made by coagulating animal milk either from a natural process or by addition of rennet or other curdling agent and then removing the whey. Curd and processed cheese are excluded. Metric tons.		
3112-05	<u>Ice-cream</u>	
Mixture containing 80 per cent cream and milk products, 15 per cent sweeteners and no less than 10 per cent butter fat, with some amounts of colour and flavour. Cubic metres.		

ISIC-based code	Commodity	SITC-based code
III. Manufactures (continued)		
3113-01	<u>Fruits, dried</u>	05200-0
Fruits prepared either by direct drying in the sun or by industrial processes, whether or not containing added sugar. Drained, glacé or crystallised fruit as well as dried citrus fruit are excluded. Metric tons.		
3113-02	<u>Fruit, frozen</u>	05361-0+
Fruits, whether or not cooked, frozen by ordinary refrigeration or by the "quick-freezing" process. SITC 05361 and 05362. Metric tons.		
3113-03	<u>Fruit, tinned or bottled</u>	05390-1
Fruits preserved in syrup, in water, in chemicals or in alcohol, and put in hermetically-sealed containers or bottles. Metric tons net weight.		
3113-04	<u>Fruit and vegetable juices, concentrated, frozen or not</u>	05350-1
Unfermented juice of fruit or vegetables, concentrated or in the form of crystals or powder, whether or not containing added sugar (but not containing added alcohol) and whether or not intended for consumption as beverages. Unfermented grape juice is included. Metric tons.		
3113-05	<u>Fruit and veg. juices, unconcentrated, frozen or not</u>	05350-3
Unfermented juice of fruit or vegetables presented in liquid form, whether or not containing added sugar (but not containing added alcohol) and whether or not intended for consumption as beverages. Unfermented grape juice is included. Metric tons.		
3113-06	<u>Jams, marmalades and fruit jellies</u>	05330-0
Cooked preparations of fruits, whether or not containing added sugar, including jams made with vegetables or with products such as ginger; mincemeat and fruit curd are included. Metric tons.		
3113-07	<u>Vegetables, frozen</u>	05461-0
Vegetables, whether or not cooked, frozen by ordinary refrigeration or by the "quick-freezing" process. Metric tons.		
3113-08	<u>Vegetables, tinned or bottled</u>	05552-1
Vegetables prepared or preserved and put in hermetically-sealed containers or bottles. Metric tons net weight.		
3114-01	<u>Fish, frozen</u>	03110-5
Frozen fish and fish products, including production on board fish factory ships. Metric tons.		
3114-02	<u>Fish, salted, dried or smoked</u>	03120-0
Salted, dried or smoked edible fish (whole, in pieces or filleted) including those preserved in brine. Production on fish factory ships is included. Metric tons.		
3114-03	<u>Fish, tinned</u>	03201-0
Edible fish products packed and heat-processed in hermetically-sealed containers. Prior to packing, the products may have been smoked, dried, seasoned or otherwise prepared.		
3115-01	<u>Oils and fats of animals, unprocessed</u>	41130-0
Crude, refined or purified oils, unrendered fats of pigs, poultry, bovine cattle, sheep or goats, tallow, lard stearine, and lard oil, wool grease and degrease. Processed products on the basis of these oils are excluded. Metric tons.		



ISIC-based code	Commodity	SITC-based code	ISIC-based code	Commodity	SITC-based code
III. Manufactures (continued)			III. Manufactures (continued)		
3115-02	<u>Oils and fats of aquatic animal origin</u>	41110-0	3116-04	<u>Meal and groats of all cereals</u>	04602-04
	Oils and fats of fish and marine mammals, edible or inedible, crude and refined, but not further prepared, extracted from the body of the aquatic animal or from its liver, viscera or any other part (for example, whale oil, sperm oil, whale liver oil, fish liver oils, fish body oils). Processed products on the basis of these oils are excluded. Metric tons.			Small fragments of floury kernels obtained by the rough grinding of grains of all cereals (groats) and granules obtained either from the first sifting after the initial milling operation, or by regrinding and resifting the groats resulting from than initial milling (meal). SITC 04602 and 04702. Metric tons.	
3115-03	<u>Oil, cotton-seed, crude</u>	42130-1	3117-01	<u>Bread, ships' biscuits and other ordinary bakers' wares</u>	04841-0
	Metric tons.			Ordinary bakers' wares (including wholemeal bread and ships' biscuits), that is, containing only normal bread ingredients (cereal flours, leavens, salt) in terms of baked weight. Bakers' wares containing added sugar, honey, eggs, fats, cheeses, fruit or cocoa are excluded. Metric tons.	
3115-04	<u>Oil, cotton-seed, refined</u>	42130-5	3117-02	<u>Pastry, cakes, and other fine bakers' wares</u>	04842-0
	Once-refined cotton-seed oil (after alkali or caustic wash and before deodorizing or use in end products). Metric tons.			Bakery products containing sugar, honey, eggs, fats, cheese, fruit or cocoa; in terms of baked weight. Products containing meat and fish are excluded. Metric tons.	
3115-05	<u>Oil, groundnut, crude</u>	42140-1	3117-03	<u>Macaroni and noodle products, uncooked</u>	04830-0
	Metric tons.			Uncooked products made generally from semolina or wheat flour doughs by extrusion, moulding or rolling. "Couscous" made of hard wheat semolina, steamed and dried, is included. Stuffed dough products (for example, ravioli, tortellini, etc.) and cooked macaroni, spaghetti, etc. are excluded. Metric tons.	
3115-06	<u>Oil, groundnut, refined</u>	42140-3	3117-04	<u>Farinaceous preparations</u>	09909-1
	Groundnut or peanut oil once-refined (after alkali or caustic wash and before deodorizing or use in end products). Metric tons.			Cooked stuffed dough products, such as ravioli, tortellini, cannelloni and the like, consisting of pastes of the macaroni type, ready for consumption after heating. Metric tons.	
3115-07	<u>Oil, olive, crude</u>	42150-1	3118-01	<u>Raw sugar</u>	06110-0
	Metric tons.			Crude beet and cane sugars in crystalline form. Aqueous solutions of raw sugar are excluded. Metric tons.	
3115-08	<u>Oil, olive, refined</u>	42150-3	3118-02	<u>Refined sugar</u>	06120-0
	Hundred per cent olive oil presented as end product. Metric tons.			Beet sugar and cane sugar, refined, in solid form or powder, including white sugar derived directly from the processing of sugar beet. Aqueous solutions of sugar with added flavouring or colouring matter are excluded. Metric tons.	
3115-09	<u>Oil, soya bean, crude</u>	42120-1	3119-01	<u>Cocoa butter</u>	07232-0
	Metric tons.			Fat and oil contained in cocoa beans. Metric tons.	
3115-10	<u>Oil, soya bean, refined</u>	42120-3	3119-02	<u>Cocoa powder</u>	07220-0
	Soya bean oil once-refined (after alkali or caustic wash and before deodorizing or use in end products). Metric tons.			Unsweetened powder obtained by pulverising the partly defatted cocoa paste. Sweetened cocoa powder and cocoa powder to which milk powder or peptones have been added are excluded. Metric tons.	
3115-11	<u>Oil, other, of vegetable origin, crude</u>	42200-1	3119-03	<u>Chocolate and chocolate products</u>	07300-0
	Metric tons.			Chocolate and food preparations containing cocoa or chocolate, including sweetened cocoa powder, chocolate powder and chocolate spreads.	
3115-12	<u>Oil, other, of vegetable origin, refined</u>	42200-3	3119-04	<u>Fruit, glacé or crystallised</u>	05320-0
	Linseed oil, palm oil, coconut (copra) oil, palm kernel oil, castor oil and those oils covered under SITC 4229. Refined oils are those once-refined (after alkali or caustic wash and before deodorizing or use in end products). Metric tons.			Fruit, fruit-peel and parts of plants, preserved by sugar either drained, glacé or crystallised. Metric tons.	
3115-13	<u>Margarine, imitation lard and other prepared fats</u>	09140-0	3119-05	<u>Sugar confectionery</u>	06201-0
	Solid edible preparations of fats, consisting of mixtures of different animal fats and oils, different vegetable fats and oils, or both. Fats and oils simply refined, or both hydrogenated and refined without further treatment and liquid mixtures of vegetable oils, are excluded. Metric tons.			Sugar preparations marketed in a solid or semi-solid form and collectively referred to as sweetmeats or confectionery. Sugar preparations containing cocoa are excluded. Metric tons.	
3116-01	<u>Cereal breakfast food</u>	04812-0			
	Prepared foods (ready to serve or to be cooked before serving) obtained by swelling or roasting of cereals or cereal products such as puffed rice, corn flakes and similar products. Metric tons.				
3116-02	<u>Flour, cereal, other than wheat</u>	04701-0			
	Sifted (bolted) flour of cereals other than wheat or meslin. Metric tons.				
3116-03	<u>Flour, wheat</u>	04601-0			
	Sifted (bolted) flour made from wheat or meslin. Metric tons.				

ISIC-based code	Commodity	SITC-based code
III. Manufactures (continued)		
3121-01	<u>Coffee extracts</u>	07105-0
Coffee extracts, essences and concentrates in liquid or powder form. Metric tons.		
3121-02	<u>Vinegar</u>	09907-0
Wine vinegar, beer and malt vinegar, fermented fruit vinegar, spirit vinegar and substitutes for vinegar (obtained by diluting acetic acid with water). In terms of 10 per cent of vinegar. Toilet vinegar is excluded. Hectolitres.		
3122-01	<u>Prepared animal feeds</u>	08199-0
Preparations of vegetable or animal origin with or without added mineral or chemical materials. They may be ready for direct consumption or may be in concentrated form requiring dilution before use. Inorganic esters and their salts, medicaments and simple mixtures of cereal grain, of cereal flours or of flours of leguminous vegetables are excluded. Biscuits for dogs and other animals, bird foods, fish foods and mineral and chemical preparations, such as egg-laying mixtures, are included. Metric tons.		
3131-01	<u>Distilled alcoholic beverages, excluding ethyl alcohol</u>	11240-1
Spirits produced by distilling wine, cider, etc., or fermented grain or other vegetable products, without adding flavouring; spirits, liqueurs and cordials containing added flavouring and other spirituous beverages. The average alcoholic content should be indicated. Hectolitres.		
3131-02	<u>Ethyl alcohol for all purposes</u>	11240-3+
Ethyl alcohol of any strength, denatured or undenatured, irrespective of its use, in terms of 100 per cent spirit. SITC 51224 and part of 1124. Hectolitres.		
3132-01	<u>Grape must</u>	11211-0
Grape must in fermentation or with fermentation arrested otherwise than by the addition of alcohol. Hectolitres.		
3132-02	<u>Wine</u>	11212-0
Ordinary wine of fresh grapes produced in wineries (red, white, rosé), sparkling wines, dessert wines (malaga, port, sherry, mistelles), vermouth and other wines flavoured with aromatic extracts. Unfermented grape juice and grape must are excluded. Hectolitres.		
3133-01	<u>Beer</u>	11230-0
Beer made from malt (including ale, stout, porter). Hectolitres.		
3133-02	<u>Malt</u>	04820-0
Roasted malt (most frequently roasted barley) as whole malt, ground malt or malt flour. Malt extracts are excluded. Metric tons.		
3134-01	<u>Mineral waters</u>	11101-1
Natural and artificial spa waters, aerated waters. Ordinary natural waters, sweetened and flavoured waters are excluded. Hectolitres.		
3134-02	<u>Soft drinks</u>	11102-0
Sweetened and flavoured spa waters (natural or artificial), lemonade, orangeade, etc. Hectolitres.		
3140-01	<u>Cigarettes</u>	12220-0
Cigarettes only. Number.		

ISIC-based code	Commodity	SITC-based code
III. Manufactures (continued)		
3140-02	<u>Cigars</u>	12210-0
Cigars of all sizes; cheroots. Number.		
3140-03	<u>Tobacco, manufactured</u>	12230-0
Smoking tobacco, chewing tobacco, snuff. Metric tons.		
3211-01	<u>Cotton yarn, pure</u>	65130-1
Pure cotton yarn, including yarn from cotton waste. Metric tons.		
3211-02	<u>Cotton yarn, mixed</u>	65130-3
Mixed yarn in which cotton or cotton waste is predominant material by weight, containing less than 10 per cent by weight of silk, noil or other waste silk or any combination thereof. Metric tons.		
3211-03	<u>Flax yarn</u>	65150-1
Flax, ramie or true hemp yarn, including yarns put up for retail sale. Metric tons.		
3211-04	<u>Jute yarn</u>	65192-1
Jute yarn obtained by spinning slivers of jute. Metric tons.		
3211-05	<u>Yarn of other vegetable textile fibres</u>	65193-0
Yarns obtained by spinning vegetable textile fibres other than cotton, flax, ramie, true hemp and jute. Metric tons.		
3211-06	<u>Wool yarn, pure</u>	65121-1+
Pure yarn of carded and combed (worsted) wool. Part of SITC 65121, 65122 and 65125. Metric tons.		
3211-07	<u>Wool yarn, mixed</u>	65121-3+
Mixed yarn in which wool is predominant material by weight, containing less than 10 per cent by weight of silk, noil or other waste silk or any combination thereof. Part of SITC 65121, 65122 and 65125. Metric tons.		
3211-08	<u>Yarn of man-made staple</u>	65164-1+
Yarns obtained by converting discontinuous man-made fibres other than textile glass fibres into slivers, rovings and yarns by processes generally similar to those used for cotton and wool. Monofil, yarns obtained by grouping together a number of filaments as they emerge from the spinnerets, either reeled parallel without twist or twisted, and continuous filament tow are excluded. Part of SITC 65164, 65165, 65174 and 65175. Metric tons.		
3211-09	<u>Cotton woven fabrics</u>	65210-0
Woven cotton fabrics (at loom stage) before undergoing finishing processes such as bleaching, dyeing, printing, mercerizing, glazing, etc. Square metres.		
3211-10	<u>Linen fabrics</u>	65331-0
Woven fabrics of flax or ramie yarn (at loom stage) before undergoing finishing processes. Square metres.		
3211-11	<u>Jute fabrics</u>	65340-0
Woven fabrics manufactured with yarns of jute at loom stage. Square metres.		
3211-12	<u>Woollen woven fabrics</u>	65320-0
Woollen and worsted fabrics in the piece (at loom stage) before undergoing finishing processes such as bleaching, dyeing, making up, etc. Fabrics of fine hair are excluded. Square metres.		

ISIC-based code	Commodity	SITC-based code
III. Manufactures (continued)		
3211-13	<u>Silk fabrics</u>	65310-0
Woven fabrics with more than 10 per cent by weight of silk or of waste silk (noil silk and other) at loom stage. Square metres.		
3211-14	<u>Woven fabrics of cellulosic fibres</u>	65350-1+
Fabrics of continuous and discontinuous rayon and acetate fibres, including pile and chenille fabrics at loom stage. Part of SITC 6535 and 6536. Square metres.		
3211-15	<u>Woven fabrics of non-cellulosic fibres</u>	65350-3+
Fabrics of continuous and discontinuous non-cellulosic fibres other than textile glass fibres, including pile and chenille fabrics at loom stage. Part of SITC 6535 and 6536. Square metres.		
3212-01	<u>Linen, bed, articles</u>	65691-1
Articles made of cotton, flax, hemp, ramie or man-made fibres, such as bed sheets, pillow cases, mattress covers, etc. Table linens and other furnishing articles are excluded. Square metres.		
3212-02	<u>Blankets</u>	65660-0
Blankets, travelling rugs, coverlets. Specially-shaped rugs and blankets for animals, bedspreads and counterpanes, and quilted or stuffed bed coverings are excluded. Number.		
3212-03	<u>Towelling</u>	65691-3
Toilet linen, that is, hand and face towels (including roller towels), bath towels, face cloths and toilet gloves. Number.		
3213-01	<u>Knitted fabrics</u>	65370-0
Knitted or crocheted fabric (of all textile fibres), neither elastic nor rubberized. Knitted garments are excluded. Metric tons.		
3213-02	<u>Knitted sports shirts</u>	84144-1
Knitted and crocheted sports shirts for men, women and children, made in knitting mills. Number.		
3213-03	<u>Knitted sweaters</u>	84144-3
Knitted and crocheted sweaters, cardigans, pull-overs and jackets for men, women and children, made in knitting mills. Number.		
3213-04	<u>Other knitted outer garments</u>	84144-5
Other knitted and crocheted outer garments made in knitting mills, such as dresses, coats, minor articles of apparel, curtains, blankets, etc. Number.		
3213-05	<u>Knitted under garments</u>	84143-0
Knitted or crocheted under garments made in knitting mills, such as undershirts, pyjamas, night-gowns, drawers, slips, petticoats, camisoles, theatrical flesh tights. Elastic and rubberized under garments (corsets, brassieres, braces, etc.) are excluded. Number.		
3213-06	<u>Women's stockings</u>	84142-1
Knitted or crocheted women's stockings extending above the knee, of man-made fibres, silk, cotton, wool or other textile fibres, made in knitting mills. Elastic and rubberized stockings are excluded, but those having rubber threads or elastic forming merely a supporting band are included. Number of pairs.		
3213-07	<u>Socks and other stockings</u>	84142-3
Knitted or crocheted socks for men, women and children, extending from the ankle to below the knee, and knitted or crocheted stockings for men and children extending above the knee, of man-made fibres, cotton, wool or other textile fibres, made in knitting mills. Elastic and rubberized socks of all kinds and stockings for men and children are excluded, but those having rubber threads or elastic forming merely a supporting band are included. Number of pairs.		

ISIC-based code	Commodity	SITC-based code
III. Manufactures (continued)		
3214-01	<u>Carpets and rugs of wool, knotted</u>	65750-0
Knotted wool carpets and rugs made up or not, composed of a taut warp around which the pile threads are knotted (Gordes or Turkish knot; Senna or Persian knot; and single warp knots) in a complete turn. Square metres.		
3214-02	<u>Carpets and rugs, other</u>	65760-0
Other carpets, carpeting and rugs, mats and matting, kelem, "schumacks" and "karamanic" rugs and the like, made up or not. Square metres.		
3215-01	<u>Cordage, rope and twine</u>	65561-0
Twine, cordage, ropes and cables of all fibres produced by twisting or by plaiting. Textile yarns reinforced with metal are included. Twine, cordage, ropes and cables of paper yarn are included only if plaited or reinforced with metal. Fancy cords, cords of a kind commonly used in machinery or plant as packing or lubricating materials, abrasives, coated twine, cord, etc., gymnasium apparatus and articles of twine, cordage, ropes and cables are excluded. Metric tons.		
3219-01	<u>Floor covering</u>	65740-0
Floor covering (other than carpets and blankets) on base of paper, paperboard or felt paper, whether or not coated with linoleum; and linoleum on textile bases; cut in sheets or tiles. Square metres.		
3220-01	<u>Overcoats, men's and boys'</u>	84111-1
Men's and boys' overcoats of all types other than raincoats, such as overcoats, topcoats, greatcoats, duffel coats (with or without hoods), capes and cloaks. Dressing-gowns, bath-robos and similar indoor wear are excluded. Number.		
3220-02	<u>Raincoats, men's and boys'</u>	84111-2
Men's and boys' coats, capes and cloaks of all types which have been specially treated to make them water-repellent. Number.		
3220-03	<u>Suits, men's and boys'</u>	84111-3
Men's and boys' suits of all types, such as lounge suits, dress suits, dinner-jacket suits, morning suits, clerical suits, plus-fours, siren suits, skiing, hunting and other sports suits and uniforms of all kinds (including liveries). They consist of a jacket and a pair of trousers (usually matching) and may include a vest and an extra pair of trousers. Suits for small boys consisting of a jacket and a pair of short pants are included. Number.		
3220-04	<u>Jackets, men's and boys'</u>	84111-4
Jackets produced for sale as individual garments rather than as a part of a combined costume. Waistcoats, blazers, sports jackets and jackets of battle-dress type are included. Smoking-jackets designed primarily for indoor wear are excluded. Number.		
3220-05	<u>Trousers, men's and boys'</u>	84111-5
Trousers for men and boys produced for sale as individual garments rather than as part of a combined costume. Knickerbockers, breechers and shorts are included. Number.		
3220-06	<u>Shirts, men's and boys'</u>	84113-1
Men's and boys' shirts of all types, with full-length or short sleeves, designed to be worn with or without a tie, such as shirts for street wear, dress shirts, work shirts and sports shirts. Knitted sports shirts made in knitting mills are excluded. Number.		
3220-07	<u>Underwear, men's and boys'</u>	8413-2
Underwear made from woven or knitted fabrics other than knitted garments made in knitting mills. Elastic or rubberized garments are excluded. Number.		

ISIC-based code	Commodity	SITC-based code
-----------------	-----------	-----------------

III. Manufactures (continued)

3220-08	<u>Coats, women's and girls'</u>	84112-1
---------	----------------------------------	---------

Women's and girls' coats of all types other than raincoats, such as overcoats, spring coats, duffel coats (with or without hoods), capes and cloaks. Jackets, boleros, and beach wraps are excluded as well as dressing-gowns, bathrobes, négligés, bed jackets, house coats and similar indoor wear. Number.

3220-09	<u>Raincoats, women's and girls'</u>	84112-2
---------	--------------------------------------	---------

Women's and girls' coats, capes and cloaks of all types which have been specially treated to make them water-repellent. Number.

3220-10	<u>Dresses, women's and girls'</u>	84112-3
---------	------------------------------------	---------

Women's and girls' dresses of all types, such as street dresses, cocktail dresses, evening dresses, house dresses and schoolgirls' tunics. They may include a matching jacket or bolero. Two-piece dresses consisting of a matching blouse and skirt are included. Knitted dresses made in knitting mills are excluded. Number.

3220-11	<u>Suits, women's and girls'</u>	84112-4
---------	----------------------------------	---------

Women's and girls' suits of all types, consisting essentially of a jacket and skirt or a jacket and a pair of trousers (usually matching), including skiing, riding, hunting and other sports suits. Knitted suits made in knitting mills are excluded. Number.

3220-12	<u>Skirts, slacks and shorts, women's and girls'</u>	84112-5
---------	--	---------

Women's and girls' skirts, slacks or shorts of all types, produced for sale as individual garments rather than as part of a combined costume, other than those made in knitting mills. Number.

3220-13	<u>Blouses, women's and girls'</u>	84112-6
---------	------------------------------------	---------

Women's and girls' blouses of all types, with or without sleeves, extending from the shoulders to the waist. They may button down the front or back or may be pulled on over the head and shoulders. Number.

3220-14	<u>Underwear, women's and girls'</u>	84143-1
---------	--------------------------------------	---------

Underwear made from woven fabrics or knitted fabrics, other than knitted garments made in knitting mills. Elastic or rubberized garments are excluded. Number.

3231-01A		61130-1A+
3231-01B	<u>Heavy leather</u>	61130-1B+

For description see 3231-02. Metric tons and square metres.

3231-02A		61130-2A+
3231-02B	<u>Light leather</u>	61130-2B+

Hides and skins, tanned (including chamois-dressed), parchment dressed or otherwise prepared as leather, undressed or dressed, but excluding those tanned or dressed with the hair on. Reconstituted and artificial leather are excluded. The two items together correspond to SITC 6113, 6114 and 6119. The headings include, *inter alia*, sole leather (in heavy leather); upper and lining leather; leather for hand-bags (in light leather). Metric tons and square metres.

3240-01	<u>Footwear, leather, men's</u>	85102-1
---------	---------------------------------	---------

For description see 3240-03. Number of pairs.

3240-02	<u>Footwear, leather, women's</u>	85102-2
---------	-----------------------------------	---------

For description see 3240-03. Number of pairs.

ISIC-based code	Commodity	SITC-based code
-----------------	-----------	-----------------

III. Manufactures (continued)

3240-03	<u>Footwear, leather, children's</u>	85102-3
---------	--------------------------------------	---------

Boots and shoes with leather, rubber, composition leather or plastic soles, and with leather or mainly leather uppers. Rubber footwear is excluded. Number of pairs.

3240-04	<u>Footwear, house</u>	85104-2
---------	------------------------	---------

House-slippers, underwedge slippers such as slip-on type, without laces, buckles, zippers or other closures, of underwedge heel construction, or with leather upper and split leather tread sole and heel held together by a blown sponge rubber midsole created and simultaneously attached thereto. Slipper socks are excluded. Number of pairs.

3240-05	<u>Sandals</u>	85104-1
---------	----------------	---------

Sandals of various types "espadrilles", "alpargatas" (shoes with canvas uppers and soles of plaited vegetable material) and similar light footwear. Rubber footwear is excluded. Number of pairs.

3240-06	<u>Footwear, other</u>	85102-4+
---------	------------------------	----------

All other footwear such as sport footwear equipped with spikes, studs, bars, etc.; and orthopedic leather footwear. Rubber footwear is excluded. Part of SITC 85102, 85103 and 85105. Number of pairs.

3311-01	<u>Sawnwood, coniferous</u>	24320-0
---------	-----------------------------	---------

For description see 3311-02. Cubic metres.

3311-02	<u>Sawnwood, broadleaved</u>	24330-0
---------	------------------------------	---------

Sawnwood includes wood simply sawn lengthwise (for example, planks, beams, joists, boards, rafters, scantlings, laths, etc.) and wood which has been sliced, peeled or rotary cut, and which is more than 5 mm. thick. Rough sawnwood is often further processed in the same establishment into planed, tongued, grooved, chamfered, rabbeted, V-jointed and beaded wood, etc.; where this occurs, production may be counted at the sawn stage or at a later stage, but steps should be taken to ensure that the sawn wood is not counted more than once. Boxboards (part of SITC 6321) and sawn railway sleepers (part of SITC 2431) are excluded, as is wood sawn into sheets of a thickness of 5 mm. or less. Cubic metres.

3311-03	<u>Blockboard</u>	63121-1
---------	-------------------	---------

Blockboard, laminboard and battenboard consist of a thick core composed of blocks, laths or battens of wood glued together and surfaced with outer plies. Cubic metres.

3311-04	<u>Cellular wood panels</u>	63122-0
---------	-----------------------------	---------

Similar in appearance to blockboards, except that the battens or laths forming the core are spaced either parallel or in lattice form. Cubic metres.

3311-05	<u>Plywood</u>	63121-3
---------	----------------	---------

A wooden sheet material consisting of three or more layers of veneers glued or cemented together, the grains of adjoining plies usually being at right angles to one another. This item includes veneered panels, that is, sheets or panels consisting of a thin veneer of wood affixed to a base, usually of inferior wood, by gluing under pressure. Cubic metres.

3311-06	<u>Veneer sheets</u>	63110-0
---------	----------------------	---------

Thin sheets of wood of a uniform thickness not exceeding 5 mm. (excluding any reinforcing material), produced by a sawing, slicing or peeling (rotary cutting) process for use in making plywood and other types of laminated boards, furniture, veneer containers, etc. Cubic metres.

ISIC-based code	Commodity	SITC-based code	ISIC-based code	Commodity	SITC-based code
-----------------	-----------	-----------------	-----------------	-----------	-----------------

III. Manufactures (continued)

3511-07 Particle board 63142-0  
 Sheet material manufactured from small pieces of wood or other ligno-cellulosic materials (for example, chips, flakes, splinters, strands, shreds, shives, etc.) agglomerated by use of an organic binder together with one or more of the following agents: heat, pressure, humidity, a catalyst, etc. Wood wool or other particle boards agglomerated by means of an inorganic binder such as cement or plaster are excluded. Cubic metres.

3511-08 Wooden railway sleepers 24310-0  
 Pieces of wood of more or less rectangular section, suitable for laying transversely on the railway road-bed to support the rails. Cubic metres.

3520-01 Mattresses 82103-1  
 Mattresses fitted with internal springs or filled with any material (cotton, wool, horsehair, down, etc.) or of expanded foam or sponge rubber or artificial materials (whether or not covered with woven fabrics, plastic materials, etc.). Mattress supports are excluded. Number.

3520-02 Mattress supports 82103-3  
 Normally a wooden or metal frame fitted with springs or steel wire mesh (spring or wire supports). Number.

3411-01 Wood pulp, mechanical 25120-0  
 Fibrous material prepared from wood by mechanical disintegration. It includes exploded and defibrated pulp and mechanical screenings. In terms of 90 per cent air-dry weight. Metric tons.

3411-02 Wood pulp, sulphate 25170-0  
 Wood pulp prepared by an alkaline process in which the liquor used for digestion contains a mixture of sodium hydroxide and sodium sulphide (sulphate method), and sodium hydroxide alone (soda method). Includes chemical sulphate screenings. In terms of 90 per cent air-dry weight. Metric tons.

3411-03 Wood pulp, sulphite 25180-0  
 Wood pulp prepared by an acid pulping process. The liquor used is an aqueous solution of sulphurous acid in which lime or some other base has been dissolved. It may be bleached or not. Includes chemical sulphite screenings. In terms of 90 per cent air-dry weight. Metric tons.

3411-04 Wood pulp, dissolving grades 25160-0  
 Bleached hardwood or softwood chemical pulp (sulphite or sulphate), of high alpha-cellulose content readily adaptable for uses other than paper-making (rayon, cellophane, lacquers, etc.). In terms of 90 per cent air-dry weight. Metric tons.

3411-05 Wood pulp, semi-chemical 25190-0  
 Wood pulp in which the fibres are partly separated without material damage by a sequence of chemical and mechanical actions and where the conditions of the separation treatment are not sufficiently severe in themselves to bring about a complete separation of the fibres. In terms of 90 per cent air-dry weight. Metric tons.

3411-06 Newsprint 64110-0  
 Bleached, unsized or slack-sized printing paper, without coating, of the type usually used for newspapers; weight from 45 to 60 grammes per square metre, usually with at least 70 per cent of the weight of fibrous material derived from mechanical pulp. Metric tons.

3411-07 Paper, kraft 64130-0  
 Paper of high mechanical strength made entirely from unbleached sulphate softwood chemical pulp. May include bleached kraft paper made from bleached kraft pulp.

III. Manufactures (continued)

3411-08 Paperboard and other paper (excluding tar paper) 64140-0+  
 This item includes all grades of paper and paperboard in rolls or sheets (except newsprint, other printing and writing paper and tar paper), for example, cigarette paper; household and sanitary paper; tissue paper; wrapping and packing paper and paperboard such as greaseproof and glassine paper, liner board, sulphite wrapping paper, fluting or corrugated paper and folding boxboard; cable wrapping (insulating) paper; and filter paper (SITC 6414, 6415, 6417 and part of 6419). This item includes only base paper and paperboard in rolls and sheets and excludes converted paper in rolls and sheets such as fluted or corrugated paper, coated paper and paperboard, ruled or squared paper and paperboard and wallpaper, as well as articles of paper and paperboard. Metric tons.

3511-01 Aluminium oxide 51365-1  
 $Al_2O_3$  anhydrous or calcined alumina. Natural alumina is excluded. Metric tons.

3511-02 Aluminium sulphate 51424-1  
 $Al_2(SO_4)_3$  ordinary or pure, in terms of  $Al_2O_3$ . Metric tons.

3511-03 Ammonia 51361-0  
 Ammonia obtained from impure ammoniacal gas liquors in coal gas purification and coke works or by synthesis from hydrogen and nitrogen, expressed in terms of 100 per cent N. Metric tons.

3511-04 Calcium carbide 51494-0  
 $CaC_2$  in terms of 75 per cent of C. Metric tons.

3511-05 Carbon bisulphide 51342-1  
 $CS_2$ . Metric tons.

3511-06 Carbon monoxide 51339-1  
 Pure CO. Metric tons.

3511-07 Caustic soda 51362-0  
 NaOH. This item excludes soda lyes obtained as residual products from the manufacture of wood pulp by the alkali or sulphate processes, and mixtures of sodium hydroxide and lime known as soda lime. Metric tons.

3511-08 Chlorine 51321-0  
 Gas usually obtained by electrolysis of alkali chlorides, especially sodium chloride. Metric tons.

3511-09 Chromium pigments 53310-1  
 Pigments with basis of chromium compounds. Metric tons.

3511-10 Copper sulphate 51424-2  
 $CuSO_4 \cdot 5 H_2O$  (cupric sulphate). Cuprous sulphate  $Cu_2SO_4$  is excluded. Metric tons.

3511-11 Hydrated alumina 51365-2  
 Aluminium hydroxide  $Al_2O_3 \cdot 3 H_2O$  or  $Al(OH)_3$  in terms of  $Al_2O_3$ . Metric tons.

3511-12 Hydrochloric acid 51331-1  
 HCl in all forms, in terms of 100 per cent HCl. Chloro-sulphuric acids are excluded. Metric tons.

ISIC-based code	Commodity	SITC-based code	ISIC-based code	Commodity	SITC-based code
III. Manufactures (continued)			III. Manufactures (continued)		
3511-13	<u>Hydrogen peroxide</u>	5142-0	3511-26	<u>Vegetable tanning extracts</u>	5240-0
	H <sub>2</sub> O <sub>2</sub> including solid hydrogen peroxide combined with urea, whether or not stabilized. Hydrogen peroxide put up as a pharmaceutical preparation is excluded. Metric tons.			Tannin content (Shake method) of various tanning extracts of vegetable origin from oak, chestnut, quebracho, pines, wattle, sumach, myrobolans, willonia, gambier, mangrove and divi-divi. Tannins, tanning extracts mixed with synthetic tanning substances and concentrated sulphite lye are excluded. Metric tons.	
3511-14	<u>Lead oxides</u>	5135-0	3511-27	<u>Zinc oxide</u>	51351-1
	Such as oxide, dioxide, litharge, massicot, minium, orange lead, puce oxide, etc. Metric tons.			ZnO zinc white including zinc peroxide (ZnO <sub>2</sub> ). Natural zinc oxide or zincite is excluded. Metric tons.	
3511-15	<u>Lithopone</u>	53310-2	3511-28	<u>Acetaldehyde</u>	51241-1
	Lithopone and other pigments with a basis of zinc sulphide, such as white pigments consisting of mixtures in varying proportions of zinc sulphide and barium sulphide. Metric tons.			Pure CH <sub>3</sub> · CHO (ethanal), saturated acyclic aldehyde. Metric tons.	
3511-16	<u>Nitric acid</u>	513340	3511-29	<u>Acetates: methyl, ethyl, butyl</u>	51251-1
	HNO <sub>3</sub> in terms of 100 per cent HNO <sub>3</sub> . Sulpho-nitric acids are excluded. Metric tons.			Esters of acetic acid corresponding to the formula in which the hydrogen atom of the carboxyl group (COOH) is replaced by an alkyl or aryl radical. Metric tons.	
3511-17	<u>Phosphoric acid</u>	51355-1	3511-30	<u>Acetic acid</u>	51251-2
	In terms of phosphorus pentoxide (P <sub>2</sub> O <sub>5</sub> ), orthophosphoric acid (H <sub>3</sub> PO <sub>4</sub> ), pyrophosphoric acid (H <sub>4</sub> P <sub>2</sub> O <sub>7</sub> ) and metaphosphoric acid (HPO <sub>3</sub> ) produced by the thermal process, by sulphuric acid reaction or by other processes. Metric tons.			CH <sub>3</sub> · COOH in terms of 100 per cent obtained by the dry distillation of wood or by synthesis. Metric tons.	
3511-18	<u>Soda ash</u>	51428-0	3511-31	<u>Acetone</u>	51243-1
	Na <sub>2</sub> CO <sub>3</sub> . Sodium bicarbonate (NaHCO <sub>3</sub> ) and natural sodium carbonate are excluded. Metric tons.			Propanone CH <sub>3</sub> · CO · CH <sub>3</sub> . Metric tons.	
3511-19	<u>Sodium cyanide</u>	51431-1	3511-32	<u>Acetylene</u>	51212-1
	NaCN. Metric tons.			Pure C <sub>2</sub> H <sub>2</sub> . Metric tons.	
3511-20	<u>Sodium dichromate</u>	51435-1	3511-33	<u>Acetylsalicylic acid</u>	51253-1
	Na <sub>2</sub> Cr <sub>2</sub> O <sub>7</sub> · 2 H <sub>2</sub> O, in terms of Cr <sub>2</sub> O <sub>3</sub> . Metric tons.			C <sub>2</sub> H <sub>3</sub> O <sub>2</sub> C <sub>6</sub> H <sub>4</sub> CO <sub>2</sub> H also known as ortho-acetoxy-benzoic acid; aspirin. Metric tons.	
3511-21	<u>Sodium silicates</u>	51433-1	3511-34	<u>Activated carbon</u>	59992-0
	In terms of SiO <sub>2</sub> . Metric tons.			Activated carbon and activated natural mineral products (that is, activated diatomite, certain volcanic minerals, activated clays and earths, activated bauxite). Activated carbons having the character of medicament, catalysts consisting of chemical products are excluded. Metric tons.	
3511-22	<u>Sulphur, recovered</u>	27410-2	3511-35	<u>Acrylonitrile</u>	51276-1
	Sulphur content of iron and copper pyrites, including pyrite concentrates obtained from copper, lead and zinc ores. The sum of items 2902-05, 3511-22 and 3511-23 corresponds to SITC 2741. Metric tons.			Pure H <sub>2</sub> C=CHCN. Acrylonitrile polymers and co-polymers are excluded. Metric tons.	
3511-23	<u>Sulphur as by-product</u>	27410-3	3511-36	<u>Aliphatic hydrocarbons, other</u>	51212-2
	Sulphur recovered as by-product in the purification of coal-gas, in petroleum refineries and gas plants and from copper, lead and zinc sulphide ores. The sum of items 2702-05, 3511-22 and 3511-23 corresponds to SITC 2741. Metric tons.			Other pure aliphatic hydrocarbons C <sub>5</sub> and higher (hexanes, heptanes, octanes, decanes, etc.). Ethanes, propanes and butanes are excluded. Metric tons.	
3511-24	<u>Sulphuric acid</u>	51333-0	3511-37	<u>Aniline</u>	51271-1
	H <sub>2</sub> SO <sub>4</sub> in terms of pure monohydrate sulphuric acid, including the sulphuric acid equivalent of oleum or "fuming" sulphuric acid (H <sub>2</sub> SO <sub>4</sub> + n SO <sub>3</sub> ). Metric tons.			C <sub>6</sub> H <sub>5</sub> NH <sub>2</sub> , phenylamine, aromatic monoamine. Metric tons.	
3511-25	<u>Titanium oxides</u>	51355-0	3511-38	<u>Benzene</u>	51212-3
	TiO <sub>2</sub> and TiO <sub>3</sub> . Natural titanium dioxide is excluded. Metric tons.			Pure C <sub>6</sub> H <sub>6</sub> . Includes benzene obtained by dealkylation. Metric tons.	
			3511-39	<u>Butyl alcohols</u>	51222-1
				Including n-Butyl, isobutyl, sec-butyl and tert-butyl alcohols. Methyl, ethyl alcohols and glycerol are excluded. Metric tons.	

ISIC-based code	Commodity	SITC-based code	ISIC-based code	Commodity	SITC-based code
III. Manufactures (continued)			III. Manufactures (continued)		
3511-40	<u>Butylenes, butadiene</u>	51212-4	3511-55	<u>Phthalic anhydride</u>	51252-1
	Pure $C_4H_6$ . Metric tons.			Pure $C_6H_4(CO)_2O$ . Metric tons.	
3511-41	<u>Carbon tetrachloride</u>	51213-1	3511-56	<u>Propylene</u>	51212-7
	$CCl_4$ halogenated derivative of saturated cyclic hydrocarbons. Metric tons.			Pure $C_3H_6$ should be shown at 100 per cent. However, the tonnage of the $C_3$ cuts should be counted as pure propylene when the propylene content is at least 90 per cent. Metric tons.	
3511-42	<u>Dichloroethane</u>	51213-2	3511-57	<u>Styrene</u>	51211-0
	Pure $CH_2Cl_2$ (methylene chloride). Metric tons.			Pure $C_6H_5 \cdot CH=CH_2$ . Metric tons.	
3511-43	<u>Diethyl ether</u>	51231-1	3511-58	<u>Tartaric acid</u>	51253-2
	$C_2H_5 \cdot OC_2H_5$ also known as ethyl ether, sulphuric ether, anaesthesia ether. Metric tons.			$HOOC \cdot CH(OH) \cdot CH(OH) \cdot COOH$ . Metric tons.	
3511-44	<u>Dyestuffs, synthetic</u>	53100-0	3511-59	<u>Toluene</u>	51212-8
	Synthetic organic dyestuffs (including pigment dyestuffs), synthetic organic products of a kind used as luminophores; products of the kind known as optical bleaching agents, substantive to the fibre; natural indigo; colour lakes, in terms of 60 per cent concentration basis. Metric tons.			Pure methylbenzene $C_6H_5CH_3$ excluding toluene intended for dealkylation. Metric tons.	
3511-45	<u>Ethanediol</u>	51222-2	3511-60	<u>Trichloro ethylene</u>	51213-2
	Ethylene glycol, glycol $CH_2OHCH_2OH$ . Metric tons.			$CHCl_2CCl_2$ halogenated derivative of unsaturated acyclic hydrocarbons. Metric tons.	
3511-46	<u>Ethylene</u>	51212-5	3511-61	<u>Xylenes</u>	51212-9
	Pure $C_2H_4$ . Metric tons.			Pure dimethylbenzene $[C_6H_4(CH_3)_2]$ total of three isomers: orthoxylene, metaxylene and paraxylene. Metric tons.	
3511-47	<u>Ethylene oxide</u>	51232-1	3512-01	<u>Nitrogenous fertilizers</u>	56110-0+
	Pure $CH_2CH_2O$ . Metric tons.			N content of nitrogenous fertilizers and nitrogenous fertilizer materials other than natural (ammonia solutions, ammonium sulphate, ammonium nitrate, ammonium phosphate, calcium nitrate, calcium cyanide, nitrate of soda, nitrate of potash, nitrate of soda-potash, nitro-chalk, urea, anhydrous ammonia). Separate chemically defined compounds and compounds of a high degree of purity are excluded. (SITC 5611 and part of SITC 5619. Metric tons N content.	
3511-48	<u>Formic acid</u>	51251-3	3512-02	<u>Superphosphates</u>	56129-1+
	$H.COOH$ in terms of 100 per cent either native or obtained by synthesis. Metric tons.			(SITC 56129 and part of SITC 5619) Metric tons $P_2O_5$ content.	
3511-49	<u>Glycerine</u>	51226-1	3512-03	<u>Phosphatic fertilizers, other</u>	56129-3+
	Glycerol and glycerol lyes, including both synthetic and chemically pure glycerol. Glycerol put up as a medicament, perfumed glycerol and glycerol with added pharmaceutical substances or cosmetics are excluded. Metric tons.			$P_2O_5$ content of phosphatic fertilizers and fertilizing materials other than natural phosphatic fertilizers. (SITC 56129 and part of SITC 5619) Metric tons $P_2O_5$ content.	
3511-50	<u>Methanal</u>	51241-2	3512-04	<u>Potassic fertilizers</u>	56130-0+
	Formaldehyde $H.CHO$ saturated acyclic aldehyde also known as formalin or formol. Metric tons.			$K_2O$ content of potassic fertilizers and potassic fertilizer materials, except crude potash salts. (SITC 5613 and part of SITC 5619) Metric tons $K_2O$ content.	
3511-51	<u>Methane</u>	34110-1	3512-05A	<u>Multi-nutrient fertilizers</u>	56190-1A
	Pure $CH_4$ in gaseous form, measured at a temperature of $15^\circ C$ . and under a pressure of 760 mm. of mercury. Cubic metres.			For description see 3512-06C. Metric tons N content.	
3511-52	<u>Methyl alcohol</u>	51221-0	3512-05B	<u>Multi-nutrient fertilizers</u>	56190-1B
	Pure $CH_3 OH$ . Crude methyl alcohol (wood naphtha) is excluded. Metric tons.			For description see 3512-05C. Metric tons $P_2O_5$ content	
3511-53	<u>Naphthalene</u>	51212-6	3512-05C	<u>Multi-nutrient fertilizers</u>	56190-1C
	Pure $C_{10}H_8$ hydrocarbon with two condensed rings. Crude naphthalene is excluded. Metric tons.			Metric tons $K_2O$ content. Mixed fertilizers (physically mixed) and complex fertilizers (chemical combinations) containing two or all three major plant nutrients (N, $P_2O_5$ , $K_2O$ ). Binary and ternary fertilizers or intermediates such as ammonia, phosphoric acid and ammonium phosphates are excluded.	
3511-54	<u>Phenol</u>	51227-1			
	Pure $C_6H_5 OH$ obtained by fractional distillation of coal tars or by synthesis. Crude phenol is excluded. Metric tons.				

ISIC-based code	Commodity	SITC-based code
-----------------	-----------	-----------------

III. Manufactures (continued)

3512-05	<u>Insecticides, fungicides, disinfectants, etc.</u>	59920-0
---------	--	---------

Preparations, other than solutions, dilutions and suspensions of single chemical compounds in a liquid (unless the liquid plays an active part in the preparations) of products intended to destroy or combat pathogenic germs, insects, mosses and moulds, weeds, rodents, wild birds, etc., to disinfect seeds or to prevent vegetables from sprouting. Excluded are: separately-defined chemical compounds, medicaments, fumigants, deodorizers and disinfectant soaps. Metric tons.

3513-01	<u>Cellulosic continuous filaments</u>	65160-1+
---------	--	----------

Rayon and acetate continuous filaments produced by chemical transformation of natural organic polymers from cellulose. They comprise filament yarn composed of two or more grouped, continuous, fine filaments, usually slightly twisted together; and monofilaments other than those for use as bristle. Waste of these fibres, spun yarn and other manufactures of rayon and acetate are excluded. Metric tons.

3513-02	<u>Cellulosic staple and tow</u>	65160-2+
---------	----------------------------------	----------

Rayon and acetate discontinuous fibres ranging from around 3/4 inch to 18 inches and tow (a collection of many parallel, continuous filaments without twist grouped together in rope-like form) produced by chemical transformation of natural organic polymers from cellulose. Waste of these fibres, spun yarn and other manufactures of rayon and acetate are excluded. Metric tons.

3513-03	<u>Non-cellulosic continuous fibres</u>	65160-3+
---------	---	----------

Non-cellulosic continuous fibres made of natural polymers based on materials such as casein, or of synthetic polymers mainly from coal and oil distillation products. Textile glass fibres are excluded. They comprise filament yarn composed of two or more grouped, continuous, fine filaments, usually slightly twisted together; monofilaments other than those for use as bristle; and slit film mainly an olefin product made by slitting attenuated film to desired widths and often fibrillated by twisting. Waste, spun yarns and other manufactures are excluded. Metric tons.

3513-04	<u>Non-cellulosic staple and tow</u>	65160-4+
---------	--------------------------------------	----------

Non-cellulosic discontinuous fibres ranging from around 3/4 inch to 18 inches, and tow (a collection of many parallel, continuous filaments without twist, grouped together in rope-like form) made of natural polymers based on materials such as casein, or of synthetic polymers mainly from coal and oil distillation products. Waste, spun yarns and other manufactures are excluded. Metric tons.

3513-05	<u>Alkyd resins</u>	58110-1
---------	---------------------	---------

Polycondensation products of polyhydric alcohols (glycerol) with polybasic organic acids (glycerophthalic resins) and maleic acids (glyceromaleic resins). Dry weight of resins. Metric tons.

3513-06	<u>Amino plastics</u>	58110-2
---------	-----------------------	---------

Materials derived by condensation of amines or amides with formaldehyde, furfuraldehyde, etc., such as urea-formaldehyde, thiourea-formaldehyde, melamine-formaldehyde, aniline-formaldehyde, etc. Dry resin content of moulding powders. Metric tons.

3513-07	<u>Phenolic and cresylic plastics</u>	58110-3
---------	---------------------------------------	---------

Material derived from condensation of phenol, cresol, xylenol, etc. or substituted phenols with aldehydes, such as: resins (novoleks); thermosetting phenol-formaldehyde resins; oil-soluble resins prepared from butylphenol, amyphenol, parahydroxydiphenyl or other substituted phenol; and modified phenolic resins. Dry resin content of moulding powders. Metric tons.

3513-08	<u>Polyethylene</u>	58120-1
---------	---------------------	---------

Dry resin content of polymerized ethylene. Metric tons.

ISIC-based code	Commodity	SITC-based code
-----------------	-----------	-----------------

III. Manufactures (continued)

5313-09	<u>Polypropylene</u>	58120-2
---------	----------------------	---------

Dry resin content of polymerized propylene. Metric tons.

3513-10	<u>Polystyrene</u>	28120-3
---------	--------------------	---------

Dry resin content of polymerized styrene. Metric tons.

3513-11	<u>Polyvinylchloride</u>	58120-4
---------	--------------------------	---------

Dry resin content of PVC derived from polymerisation of vinylchloride monomer and peroxide catalysts. Metric tons.

3513-12	<u>Regenerated cellulose</u>	58132-0
---------	------------------------------	---------

Net dry content of regenerated cellulose, cellulose nitrate, cellulose acetate and other cellulose derivatives. Collodions and vulcanized fibres are excluded. Metric tons.

3513-13	<u>Hardened proteins</u>	58191-0
---------	--------------------------	---------

Proteins which have been chemically processed to harden (for example, hardened casein and hardened gelatin). Metric tons.

3513-14	<u>Synthetic rubber</u>	23120-0
---------	-------------------------	---------

Copolymers of butadiene with styrene and acrylonitrile, and neoprene and butyl-type rubber. Latices should be included (dry weight). Metric tons.

3521-01A	<u>Paints, cellulose</u>	53332-1A
3521-01B		53332-1B

Paints, enamels and varnishes with cellulose derivative bases. Metric tons and hectolitres.

3521-02A	<u>Paints, water</u>	53332-2A
3521-02B		53332-2B

Water paints including aqueous emulsions and distempers in paste form or ready for use. Metric tons and hectolitres.

3521-03A	<u>Paints, other</u>	53332-3A
3521-03B		53332-3B

Other paints, enamels, pigments and extenders, varnishes, lacquers and stains other than cellulose, siccatives and other ancillary products ready for use, responding to products based on glycerophthalic resins; epoxy, acrylic or vinyl resin polyesters, polyurethanes, rubber derivatives; bituminous protective products; and products based on other resins and oils. Artists' colours, printing inks and printers' colours, theatrical grease paint and other make-up and coloured crayons and pastels are excluded. Metric tons and hectolitres.

3521-04	<u>Mastics</u>	53335-0
---------	----------------	---------

Glazier's putty, grafting putty, printers' fillings and stopping, sealing and similar mastics, including resin mastics and cements. This heading covers mastics based on: oil, sodium silicate, zinc oxychloride, magnesium oxychloride, sulphur, plaster, artificial plastic materials, zinc oxide, glycerol, rubber and luting wax. Plasters, lime and cement are excluded, as well as bituminous mastic, dental cements, brewers' pitch, factory cements and mortars. Metric tons.

3523-01	<u>Soap</u>	55410-0
---------	-------------	---------

Normal soaps of commerce, including both hard and soft soaps. Included are, in particular: household soaps, toilet soaps, transparent soaps, shaving soaps, medicated soaps, disinfected soaps, abrasive soaps, resin and naphthenate soaps, and industrial soaps. Metric tons.



ISIC-based code	Commodity	SITC-based code
-----------------	-----------	-----------------

III. Manufactures (continued)

3523-02	<u>Washing powder and detergents</u>	55420-0
---------	--------------------------------------	---------

Organic surface-active agents; surface-active preparations and washing preparations, whether or not containing soap. Metric tons.

3529-01	<u>Carbon black</u>	51327-0
---------	---------------------	---------

All forms of carbon, other than natural and artificial graphite, natural carbons in the form of solid fuels, black mineral colouring matter, animal black, activated carbon, wood charcoal and crystalline carbon in the form of diamonds. Metric tons.

3529-02	<u>Explosives</u>	57112-0
---------	-------------------	---------

Mixtures based on: nitric esters of polyhydric alcohols; other organic nitrated derivatives; ammonium nitrate; chlorates or perchlorates; initiatory explosives are included. Metric tons.

3529-03	<u>Photographic film, in rolls</u>	86242-0
---------	------------------------------------	---------

Unexposed photographic films in rolls (as opposed to plates in the flat), usually of celluloid, cellulose acetate or similar flexible materials, which normally provide for a number of exposures. Square metres.

3529-04	<u>Photographic plates and films in the flat</u>	86241-0
---------	--	---------

Unexposed plates and film in the flat (not coiled) coated with a sensitized photographic emulsion, of any material except paper. Square metres.

3529-05	<u>Photographic paper</u>	86243-0
---------	---------------------------	---------

Sensitized paper, unexposed, not developed, for the production of positive photographic prints (amateur, professional, X-ray, recording, photo-copying, etc., work); for the production of negatives by exposure in a camera; and papers used to produce blue-prints, tracings, etc. Sensitized paperboard and cloth are excluded. Square metres.

3529-06	<u>Printers' ink</u>	53320-0
---------	----------------------	---------

Including printers' colours. Metric tons.

3529-07	<u>Gelatin and gelatin derivatives</u>	59955-0
---------	--	---------

Water-soluble protein substances of animal origin (skins, bones, cartilages, etc.). Hardened gelatin and copying pastes with a basis of gelatin are excluded. Metric tons.

General note relating to petroleum products

The following fourteen items consist of liquid fuels, lubricant oils, solid and semi-solid petroleum products obtained by distillation of domestic and imported crude petroleum and shale oil. Internal transfers of feedstocks (product or combination of products, derived from crude oil which is destined for further processing, other than blending, to be transformed into one or more components of finished products) and components (derived from crude oil and/or feedstocks and destined for blending with one or more constituents to obtain a finished product without further processing) within a refinery are excluded as are transfers of feedstocks and components from one refinery to another within the country. The figures given should include that part of the output of fuel oils (as well as any other of the selected products, if applicable) which is consumed as fuel by refineries.

3530-01A		33210-1A
3530-01B	<u>Aviation gasolene</u>	33210-1B

Any of the specially-blended grades of gasolene with high anti-knock value, high stability, high volatility and low freezing point, intended for use in aviation piston-engined power units only. Natural gasolene and motor gasolene are excluded. Metric tons and cubic metres.

ISIC-based code	Commodity	SITC-based code
-----------------	-----------	-----------------

III. Manufactures (continued)

3530-02A		33295-0A
3530-02B	<u>Bitumen (asphalt)</u>	33295-0B

Black to dark brown solid or semi-solid material obtained as a residue in petroleum distillation used mainly in road surfacing. Natural asphalt is excluded. Metric tons and cubic metres.

3530-03A		33230-0A
3530-03B	<u>Distillate fuel oils</u>	33230-0B

Gas oils (with a flash point in a closed vessel of at least 55°C and distilling 90 per cent or more in volume at 360°C); fuel oils (with a flash point in a closed vessel of between 55°C and 190°C and a needle penetration at 25°C of 400 or more); domestic fuel oil (with a viscosity of less than 12 csk. at 20°C); and light fuel oils (with a viscosity of between 12 and 49 csk. at 20°C and an asphalt content of not less than 0.5 per cent). Metric tons and cubic metres.

3530-04A		33210-2A
3530-04B	<u>Gasolene-type jet fuel</u>	33210-2B

Light hydrocarbons (also naphtha type) intended for use in aviation gas-turbine units. Metric tons and cubic metres.

3530-05A		33220-1A
3530-05B	<u>Kerosene</u>	33220-1B

Mixtures of hydrocarbons with a flash point above 21°C, distilling less than 90 per cent in volume at 210°C, including losses. Jet fuel is excluded. Kerosene-type jet fuel, white spirit and special boiling-point products are excluded. Metric tons and cubic metres.

3530-06A		33220-2A
3530-06B	<u>Kerosene-type jet fuel</u>	33220-2B

Specially refined kerosene intended for use in aviation gas-turbine power units. Metric tons and cubic metres.

3530-07A		34110-2A
3530-07B	<u>Liquefied petroleum gas</u>	34110-2B

Butane, propane and liquefied gases for carburization, whether produced in petroleum refineries or in plants engaged in processing crude natural gas. Metric tons and cubic metres.

3530-08A		33250-1A
3530-08B	<u>Lubricating oils</u>	33250-1B

Mixtures of hydrocarbons distilling less than 30 per cent in volume at 300°C and with a flow point lower than 30°C; lubricating preparations consisting of mixtures of oils of any kind (animal, vegetable, mineral, silicon, etc.) are also included. Greases are excluded. Metric tons and cubic metres.

3530-09A		33210-3A
3530-09B	<u>Motor gasolene</u>	33210-3B

Mixture of relatively volatile hydrocarbons with or without small quantities of additives, which have been blended to form a fuel suitable for use in spark-ignition internal combustion engines. Natural gasolene and aviation gasolene are excluded. Metric tons and cubic metres.

3530-10A		33210-4A
3530-10B	<u>Naphthas</u>	33210-4B

Straight-run gasolene fractions as used in chemical industry and gas works. Natural gasolene is excluded. Metric tons and cubic metres.

3530-11	<u>Paraffin wax</u>	33262-1
---------	---------------------	---------

Includes paraffin wax which is a white crystalline hydrocarbon material of low oil content normally obtained during the refining of lubricating oil distillate, paraffin scale, slack wax, microcrystalline wax and wax-emulsions, used for candle manufacture, polishes and water-proofing in food containers, wrappings, etc. Metric tons.

ISIC-based code	Commodity	SITC-based code
-----------------	-----------	-----------------

III. Manufactures (continued)

3530-12	<u>Petroleum coke</u>	33294-0
---------	-----------------------	---------

The solid residue obtained by the distillation of heavier petroleum oils; used mainly in metallurgical processes. Metric tons.

3530-13A		33240-0A
3530-13B	<u>Residual fuel oils</u>	33240-0B

Mixtures of hydrocarbons with a viscosity of at least 49 csk. at 20°C and an asphalt content of at least one per cent. Metric tons and cubic metres.

3530-14A		33220-3A
3530-14B	<u>White spirit</u>	33220-3B

A highly-refined distillate with a boiling-point range about 150°C to 200°C used as a paint solvent and for dry-cleaning purposes. Metric tons and cubic metres.

3540-01	<u>Brown-coal briquettes</u>	32160-2
---------	------------------------------	---------

A solid fuel manufactured from brown coal by a process in which the brown coal is partly dried, warmed to expel additional water, and then compressed in moulds into briquettes, usually without the use of a binding substance. Metric tons.

3540-02	<u>Coke-oven coke</u>	32180-1
---------	-----------------------	---------

See 3540-03. Metric tons.

3540-03	<u>Gas coke</u>	32180-2
---------	-----------------	---------

Coke is the solid residue obtained in the distillation (or carbonization) of hard coal, brown coal or peat in the absence of air; semi-coke results from the distillation of coal at low temperature. Coke-oven coke is coke produced at coke ovens from hard coal; coke breeze is included. Gas coke is coke produced at gas works from hard coal; coke breeze is included. The sum of these two items is equal to SITC 3218, minus brown-coal coke and coke of peat. Metric tons.

3540-04	<u>Hard-coal briquettes</u>	32150-0
---------	-----------------------------	---------

Briquettes, ovoids and similar solid fuels manufactured from hard coal by agglomerating the particles of coal with pitch; solid smokeless patent fuels are included. Metric tons.

3540-05	<u>Tars</u>	52110-0
---------	-------------	---------

Tars obtained from coal, lignite, peat, water gas. Tars extracted from non-mineral sources are excluded. Metric tons.

3551-01	<u>Tires for agricultural and other off-the-road vehicles</u>	62910-1
---------	---	---------

Solid rubber tires, cushion tires, reinforced tires, tires not requiring inner tubes and tire cases (outer covers) for all types of agricultural and other off-the-road tractors, construction machinery and aircraft. Excluding inner tubes, tires for bicycles and motor cycles, tires for road vehicles other than bicycles and motor cycles, tires for wheeled toys, articles of furniture, etc. Number.

3551-02	<u>Tires for bicycles and motor cycles</u>	62910-2
---------	--	---------

Excluding inner tubes. Number.

3551-03	<u>Tires for other road vehicles</u>	62910-3
---------	--------------------------------------	---------

Solid rubber tires, cushion tires, reinforced tires, tires not requiring inner tubes, tire cases (outer covers) for motor cars, lorries and all types of road vehicles other than bicycles and motor cycles. Number.

ISIC-based code	Commodity	SITC-based code
-----------------	-----------	-----------------

III. Manufactures (continued)

3551-04	<u>Inner tubes, rubber</u>	62910-4
---------	----------------------------	---------

Rubber inner tubes for motor vehicles. Number.

3559-01S	<u>Rubber, hardened</u>	62106-1
----------	-------------------------	---------

Ebonite and vulcanite in blocks, plates, sheets, strips, rods, profile shapes, powder and manufacturing waste. Articles of hardened rubber are excluded. Metric tons.

3559-02S	<u>Rubber, reclaimed</u>	25130-0
----------	--------------------------	---------

Rubber obtained from old rubber articles, or from waste or scrap of vulcanized rubber. Metric tons.

3559-03	<u>Rubber, unhardened vulcanized piping and tubing</u>	62105-0
---------	--	---------

Piping and tubing consisting wholly of vulcanized rubber and vulcanized piping and tubing reinforced by stratification of textile fabric. Inner rubber tubes for tires are excluded. Metric tons.

3559-04	<u>Rubber, unhardened vulcanized plates, sheets, etc.</u>	62104-0
---------	---	---------

Rubber, unhardened vulcanized plates, sheets, strips, rods and profile shapes, whether cut only into rectangles or in rods and profile shapes, including covered rubber material without further working. Metric tons.

3559-05	<u>Rubber, transmission, conveyor, etc.</u>	62940-0
---------	---	---------

Rubber, transmission, conveyor, elevator belts and belting are included. Belting and belts, wholly of vulcanized rubber or of fabric impregnated, coated, covered or laminated with rubber or made from textile yarns or cord impregnated or coated with rubber. Metric tons.

3559-06	<u>Rubber footwear</u>	85101-1
---------	------------------------	---------

Footwear, including overshoes, with both outer soles and uppers of rubber. Number of pairs.

3610-01	<u>Household ware of porcelain or china</u>	66640-0
---------	---	---------

Tableware and other articles of a kind commonly used for domestic purposes, of porcelain or china, including biscuit porcelain, parain and bone china. Number.

3610-02	<u>Household ware of other ceramic materials</u>	66650-0
---------	--	---------

Tableware and other utensils and articles of a kind commonly used for domestic purposes of other ceramic materials, such as common pottery, stoneware, earthenware and imitation porcelain. Number.

3610-03	<u>Sanitary ceramic fittings</u>	81220-0
---------	----------------------------------	---------

China or earthenware fittings designed to be permanently fixed in place, normally by connexion to the water or sewage system (for example, sinks, wash basins, bidets, water closet pans, urinals and the like). Small accessory bathroom or sanitary fittings are excluded. Number.

3620-01A		66511-0A
3620-01B	<u>Glass bottles and other containers of common glass</u>	66511-0B

Bottles of all shapes and sizes, jars, pots and similar containers, and stoppers and closures of common glass; blown, pressed or moulded, but not otherwise worked; inners for vacuum vessels are excluded. Number.

ISIC-based code	Commodity	SITC-based code
-----------------	-----------	-----------------

III. Manufactures (continued)

3620-02A		66440-0A
3620-02B	<u>Glass, cast, rolled, drawn or blown</u>	66440-0B

Cast, rolled, drawn or blown glass (including flashed or wired glass) in rectangles, surface ground or polished, but not further worked, used mainly in furniture, for the manufacture of mirrors, etc., in bay windows and display windows, show cases, ships, etc.; glass cut to shape other than rectangular. Bent and curved glass are excluded. Metric tons and square metres.

3620-03A		66430-0A
3620-03B	<u>Glass, drawn or blown, in rectangles, unworked</u>	66430-0B

Unworked drawn or blown glass (including flashed glass) in rectangles, used mainly for windows, doors, display cases, greenhouses, clocks and pictures, and sometimes as parts of articles of furniture, for photographic plates, plain spectacle glasses, etc. Glass cut otherwise than into rectangles is excluded. Metric tons and square metres.

3620-04A		66470-0A
3620-04B	<u>Glass, safety, of toughened or laminated glass</u>	66470-0B

Toughened or laminated glass, shaped or not, used for motor-car windscreens and windows, in doors, in ships' portholes, in protective goggles for industrial workers and drivers, and for eye-pieces for gas masks and divers' helmets. Ordinary wired glass and selective absorption glasses are excluded. Metric tons and square metres.

3691-01A		66241-0A
3691-01B	<u>Building bricks, made of clay</u>	66241-0B

Clay bricks for building purposes, including common and facing bricks (solid, hollow, shaped or perforated). Glazed, refractory, paving, concrete, shale and sand-lime bricks are excluded. Number and cubic metres.

3691-02A		66244-0A+
3691-02B	<u>Tiles, floor and wall</u>	66244-0B+

Setts, flags and other tiles commonly used for paving or for facing walls, hearths, etc., whether or not glazed. Vitrified brick and roofing tiles are excluded. The item corresponds to SITC 66244 and 66245. Number and square metres.

3691-03A		66242-0A
3691-03B	<u>Tiles, roofing, made of clay</u>	66242-0B

Clay tiles for roofs, for topping walls, etc. They may be flat, half cylinders, or of special shapes for eaves, ridges, hips or valleys. Number and square metres.

3692-01	<u>Cement</u>	66120-0
---------	---------------	---------

All hydraulic cements used for construction (portland, metallurgic, aluminous, natural, etc.). Metric tons.

3692-02	<u>Quicklime</u>	66110-1
---------	------------------	---------

Impure calcium oxide obtained by calcining limestone containing very little or no clay. Hydraulic lime and slaked lime are excluded. Metric tons.

3699-01	<u>Abrasives, agglomerated or not</u>	66310-0
---------	---------------------------------------	---------

Millstones, grindstones, grinding wheels and the like made essentially of natural stone (agglomerated or not); of agglomerated natural or artificial abrasives or of pottery. The heading does not include the natural or artificial abrasive powder or grain coated onto fabric, paper and dental burrs. Metric tons.

3699-02	<u>Abrasive cloths and paper</u>	66320-0
---------	----------------------------------	---------

Natural or artificial abrasive powder or grain, on a base of woven fabric, paper, paperboard or other materials, whether or not cut to shape, or sewn or otherwise made up. Square metres.

ISIC-based code	Commodity	SITC-based code
-----------------	-----------	-----------------

III. Manufactures (continued)

3699-03A		66183-0A
3699-03B	<u>Asbestos-cement, articles</u>	66183-0B

Articles consisting essentially of an intimate mixture of fibres (asbestos, cellulose or other vegetable fibres) and cement or other hydraulic binders. Control panels of asbestos-cement are excluded. Metric tons and cubic metres.

3699-04A		66362-1A
3699-04B	<u>Concrete blocks and bricks</u>	66362-1B

Structural blocks and bricks made of light or heavy weight aggregates. Decorative blocks are included. Metric tons and cubic metres.

3699-05	<u>Concrete pipes</u>	66362-2
---------	-----------------------	---------

Culvert, sewer, pressure, irrigation, etc., reinforced or nonreinforced, concrete pipes. Metric tons.

3699-06A		66362-3A
3699-06B	<u>Concrete, other products</u>	66362-3B

Other moulded, pressed or centrifuged articles of cement except blocks, bricks and pipes. Metric tons and cubic metres.

3710-01	<u>Pig iron, steel-making</u>	67120-1
---------	-------------------------------	---------

See 3710-02. Metric tons.

3710-02	<u>Pig iron, foundry</u>	67120-2
---------	--------------------------	---------

Pig iron is iron in liquid or solid form, containing at least 3 per cent of carbon and possibly one or more of the following elements within the weight limits specified: less than 6 per cent of silicon, less than 6 per cent of manganese, and less than 3 per cent of phosphorus. It may also contain small proportions of other elements, for example, chromium and nickel. Steel-making pig iron is distinguished from foundry pig iron on the basis of the uses to which it is put. Steel-making pig iron is pig iron for use in making crude steel; foundry pig iron is pig iron for use in making cast iron, including forge pig iron and pig iron for direct casting. The sum of these two items equals SITC 6712. Metric tons.

3710-03	<u>Spiegeleisen and ferro-manganese</u>	67110-0+
---------	---	----------

Spiegeleisen is a ferrous product containing, by weight, at least 6 per cent but not more than 25 per cent of manganese and otherwise conforming to the definition of pig iron given above. Ferro-manganese is a ferro-alloy containing, by weight, more than 25 per cent of manganese. The sum of SITC 6711 and 6714. Metric tons.

3710-04	<u>Other ferro-alloys</u>	67150-0
---------	---------------------------	---------

All ferro-alloys, other than ferro-manganese, which are produced in blast furnaces, low-shaft furnaces, electric furnaces and other types of iron-making installations. Metric tons.

3710-05	<u>Crude steel, ingots</u>	67230-1
---------	----------------------------	---------

See 3710-06. Metric tons.

3710-06	<u>Crude steel for castings</u>	67230-2
---------	---------------------------------	---------

Crude steel is steel (including alloy steel) in the form in which it emerges from the Bessemer, Thomas, open-hearth or electric process or from one of the various oxygen-blowing processes. Puddled iron is excluded. Steel ingots are primary products for rolling or forging obtained by casting the molten steel into moulds which are usually square, rectangular or octagonal in cross-section with one end thicker than the other, to facilitate removal from the mould. Steel for castings is crude steel which is used directly in liquid form for producing steel castings; steel for castings produced by independent foundries is included. Continuously-cast blooms, billets and slabs are included as ingots. Metric tons.

ISIC-based code	Commodity	SITC-based code
III. Manufactures (continued)		
3710-07	<u>Thomas (basic) slag</u>	56121-0
	P <sub>2</sub> O <sub>5</sub> content of phosphatic slag produced as a byproduct of the manufacture of steel from phosphatic iron (Thomas slag); including slag not for use as fertilizer. Metric tons.	
3710-08	<u>Angles, shapes and sections 80 mm. or more</u>	67340-0
	See 3710-09. Metric tons.	
3710-09	<u>Angles, shapes and sections, less than 80 mm.</u>	67350-0
	Angles, shapes and sections of iron and steel commonly known as H, I, T, capital omega, Z and U, obtuse; acute and right (L) angles. Sheet piling is included but rails are excluded. Metric tons.	
3710-10	<u>Bars and rods (excluding wire rod)</u>	67320-0
	Iron and steel bars and rods of all kinds (other than wire rod), including bars and rods of high carbon and alloy steel. Hollow mining drill steel is included. Metric tons.	
3710-11	<u>Hoop and strip, cold-reduced</u>	67500-1
	A flat, cold-rolled product which is not more than 500 mm. wide and is normally delivered in coils. Metric tons.	
3710-12	<u>Hoop and strip, hot rolled</u>	67500-2
	A flat, hot-rolled product which is not more than 500 mm. wide and is normally delivered in coils, including strip for use in making welded tubes. Metric tons.	
3710-13	<u>Ingot for tubes</u>	67230-3
	Ingot which are used directly for making seamless tubes, and which do not, therefore, pass through the stage of being rolled into a semi-manufactured product. Metric tons.	
3710-14	<u>Iron castings in the rough state</u>	67910-0
	Iron and malleable iron castings in the rough state. Cast-iron tubes and pipes are excluded. Metric tons.	
3710-15	<u>Plates (heavy), over 4.75 mm.</u>	67410-0
	Universals and plates which are more than 4.75 mm. thick. Metric tons.	
3710-16	<u>Plates (medium), 3 to 4.75 mm.</u>	67420-0
	Plates which are at least 3 mm. but not more than 4.75 mm. thick, including strip which is more than 500 mm. wide and 3 mm. or more thick used as such. Metric tons.	
3710-17	<u>Railway track material</u>	67610-0+
	Hot-rolled steel products for the construction of railway and tramway track, that is, rails (including check-rails and rack rails), sleepers and products used as accessories for track construction, such as fishplates, soleplates, bedplates, etc. This item does not include fabricated steel products for railway and tramway track construction, such as the following: (a) assembled track, turntables, platform buffers and loading gauges; (b) switch blades, crossings (or frogs), crossing pieces and point rods; and (c) screws, bolts, nuts, rivets and spikes used for fixing track construction materials. SITC 6761 and part of SITC 6762. Metric tons.	

ISIC-based code	Commodity	SITC-based code
III. Manufactures (continued)		
3710-18	<u>Seams for tubes</u>	67250-1
	All semi-manufactured products for use in making seamless tubes. Output of these products should be measured at the stage at which they are still solids, that is, before piercing. Metric tons.	
3710-19	<u>Sheets, electrical</u>	67430-1+
	Uncoated hot-rolled or cold-rolled sheets and strip of silicon steel for use in making electric equipment, notably motors, transformers and dynamos. Part of SITC 6743 and part of SITC 675. Metric tons.	
3710-20	<u>Sheets, galvanized</u>	67480-1+
	A product made by coating hot-rolled or cold-rolled sheets and strip on both sides with zinc containing small proportions of certain other metals. Part of SITC 6748 and part of SITC 675. Metric tons.	
3710-21	<u>Sheets under 3 mm., cold-rolled, uncoated</u>	67430-2
	Uncoated sheets less than 3 mm. thick, produced from hot-rolled products by a cold-rolling process to improve their technical properties. Metric tons.	
3710-22	<u>Sheets under 3 mm., hot-rolled</u>	67430-3
	Hot-rolled sheets which are less than 3 mm. thick, including strip which is more than 500 mm. wide and less than 3 mm. thick, and which is used as such in the country concerned. Coils for re-rolling which are exported are considered as semi-manufactured products for sale, and are therefore excluded from this item. Metric tons.	
3710-23	<u>Steel castings in the rough state</u>	67920-0
	Steel castings at the black stage, after fettling. Metric tons.	
3710-24	<u>Steel forgings</u>	67930-0
	Finished steel products produced by forging (including drop forging), hammering and pressing operations. Metric tons.	
3710-25	<u>Tinplate</u>	67470-0+
	A product made by coating hot-rolled or cold-rolled sheets and strip on both sides with commercially-pure tin. SITC 6747 and part of SITC 675. Metric tons.	
3710-26	<u>Tubes and pipes of cast iron</u>	67810-0
	Tubes and pipes manufactured of cast iron by casting in moulds or by centrifugal casting. Tubes and pipes covered with asphalt or jute are included. Fittings are excluded. Metric tons.	
3710-27	<u>Tubes, seamless</u>	67820-0
	Steel tubes produced from an ingot or a semi-manufactured product by a number of different methods involving piercing followed by a series of finishing operations. Metric tons.	
3710-28	<u>Tubes, welded</u>	67830-0
	Steel tubes generally produced from strip or sheets by a number of different processes involving welding, which may be followed by a cold-drawing finishing operation. Metric tons.	
3710-29	<u>Wheels, wheel centres, tires and axles</u>	73170-1-
	Wheels, parts of wheels and axles of steel for use in constructing vehicles running on rails. Although this item is classified under transport equipment in the SITC, the products concerned are generally made in steel works. Metric tons.	

ISIC-based code	Commodity	SITC-based code
-----------------	-----------	-----------------

III. Manufactures (continued)

3710-30	<u>Wire, plain</u>	67700-0
---------	--------------------	---------

A cold-drawn steel product of solid section of any cross-sectional shape, of which no cross-sectional dimension exceeds 13 mm., produced from wire rod by drawing it through a die. Fabricated wire products are excluded. Metric tons.

3710-31	<u>Wire rods</u>	67310-0
---------	------------------	---------

Round, oval, hexagonal, etc., hot-rolled products with a diameter of 13 mm. and less, delivered in coils. Straightened rods are excluded. Metric tons.

3720-01	<u>Aluminium, unwrought</u>	68410-0
---------	-----------------------------	---------

Aluminium obtained by electrolytic reduction of alumina (primary) and re-melting metal waste or scrap (secondary). Aluminium alloys are included. Metric tons.

3720-02	<u>Aluminium bars, rods, angles, shapes, sections</u>	68421-1
---------	---	---------

See note to 3720-10. Metric tons.

3720-03	<u>Aluminium plates, sheets, strips, foil</u>	68422-0+
---------	---	----------

See note to 3720-11. SITC 68422 and 68423. Metric tons.

3720-04	<u>Aluminium tubes and pipes</u>	68425-0
---------	----------------------------------	---------

See note to 3720-12. Metric tons.

3720-05	<u>Aluminium wire</u>	68421-2
---------	-----------------------	---------

See note to 3720-10. Metric tons.

3720-06	<u>Copper, blister</u>	68211-0
---------	------------------------	---------

Unwrought copper products obtained by smelting. Metric tons.

3720-07	<u>Copper, refined, unwrought</u>	68212-0
---------	-----------------------------------	---------

Copper obtained by fire-refining or electrolysis of copper ores and concentrates (primary) or scrap (secondary). Copper alloys are excluded. Metric tons.

3720-08	<u>Copper, alloys, unwrought</u>	68213-0
---------	----------------------------------	---------

Copper-base alloys in which copper predominates by weight over each of the other metals. Metric tons.

3720-09	<u>Copper bars, rods, angles, shapes, sections</u>	68221-1
---------	--	---------

See note to 3720-10. Metric tons.

3720-10	<u>Copper wire</u>	68221-2
---------	--------------------	---------

Rolled, extruded, drawn or forged copper products of solid section, of which the maximum cross-sectional dimension exceeds 6 mm. and which, if they are flat, have a thickness exceeding one-tenth of the width (bars, rods, angles, shapes, sections); rolled, extruded or drawn copper products of solid section of any cross sectional shape, of which no cross-sectional dimension exceeds 6 mm. (wire). The two items together correspond to SITC 68221. Metric tons.

3720-11	<u>Copper plates, sheets, strip, foil</u>	68222-0+
---------	---	----------

Flat-surfaced, wrought copper products (coiled or not), of which the maximum cross-sectional dimension exceeds 6 mm., and of which the thickness exceeds 0.15 mm. but does not exceed one-tenth of the width (plates, sheets, strip); thin sheets, not exceeding 0.15 mm. in thickness, whether or not embossed, cut to shape, perforated, coated, printed or backed with paper or other reinforcing material (copper foil). SITC 68222 and 68223. Metric tons.

ISIC-based code	Commodity	SITC-based code
-----------------	-----------	-----------------

III. Manufactures (continued)

3720-12	<u>Copper tubes and pipes</u>	68225-1
---------	-------------------------------	---------

Seamless and welded tubes and pipes, including blanks therefor, but excluding tube and pipe fittings. Metric tons.

3720-13	<u>Lead and lead alloys, unwrought</u>	68510-0
---------	--	---------

Soft lead and the lead content of antimonial lead recovered directly from lead ores and concentrates (primary) or from scrap (secondary). Lead alloys are included. Metric tons.

3720-14	<u>Lead tubes and pipes</u>	68524-1
---------	-----------------------------	---------

Seamless and welded tubes and pipes, including blanks therefor, but excluding tube and pipe fittings. Metric tons.

3720-15	<u>Tin and tin alloys, unwrought</u>	68710-0
---------	--------------------------------------	---------

Production of virgin metal (primary) and tin derived from scrap (secondary). Tin alloys are included. Metric tons.

3720-16	<u>Zinc and zinc alloys, unwrought</u>	68610-0
---------	--	---------

Zinc recovered from zinc ores and concentrates and distilled zinc and zinc produced directly from ores by electrolysis (primary); zinc recovered from scrap (secondary). Zinc alloys are included. Metric tons.

3720-17	<u>Zinc plates, sheets, strip, foil</u>	68622-1
---------	---	---------

See note to 3720-11. Metric tons.

3811-01A		69811-0A
----------	--	----------

3811-01B	<u>Locksmiths' wares</u>	69811-0B
----------	--------------------------	----------

Locks, padlocks and keys therefor of base metal. Metric tons and number.

3811-02A		69812-0A
----------	--	----------

3811-02B	<u>Hardware, general</u>	69812-0B
----------	--------------------------	----------

Base-metal fittings and mountings of a kind suitable for furniture, doors, windows, staircases, blinds, coachwork, saddlery, trunks, caskets and the like. Base-metal hat-racks, hat-pegs, baskets, etc. Metric tons and number.

3813-01	<u>Boilers, steam generating</u>	71110-0
---------	----------------------------------	---------

Steam and other vapour generating boilers (excluding central heating hot water boilers capable of producing low pressure steam); tank boilers; fire-tube boilers; water-tube boilers. Number.

3813-02A		69210-0A
----------	--	----------

3813-02B	<u>Tanks and vats</u>	69210-0B
----------	-----------------------	----------

Reservoirs, tanks, vats and similar containers, for any material, of iron and steel, copper or aluminium of a capacity exceeding 300 litres, whether or not lined or heat-insulated, but not fitted with mechanical or thermal equipment, normally installed as permanent fixtures for storage or manufacturing use, in chemical works, dye works, gasworks, etc. Metric tons and cubic metres.

3819-01A		69220-0A
----------	--	----------

3819-01B	<u>Casks, drums, etc.</u>	69220-0B
----------	---------------------------	----------

Iron, steel or aluminium containers with capacity of over 300 litres, commonly used for the conveyance or packing of goods, such as casks, drums, cans, boxes etc. Reservoirs, gas cylinders and road-rail containers are excluded. Number and cubic metres.

ISIC-based code	Commodity	SITC-based code
-----------------	-----------	-----------------

III. Manufactures (continued)

3819-02	<u>Cans, metal</u>	
---------	--------------------	--

All types of metal cans made of tinplate, terneplate, blackplate or enamelled sheet metal used for packing food and non-food products, of a capacity not exceeding 300 litres. Metric tons.

3819-05A		69230-0A
3819-05B	<u>Compressed gas cylinders</u>	69230-0B

Cylinders made of iron, steel or aluminium which are used for the transport and storage of compressed gases (oxygen, hydrogen, carbon dioxide or butane). Number and cubic metres.

3819-04	<u>Central-heating apparatus</u>	81210-1
---------	----------------------------------	---------

Boilers (excluding steam-generating boilers) and radiators for central heating; air heaters and hot-air distributors; not electric. Number.

3819-05A		73165-1A
3819-05B	<u>Containers, one cubic metre and over</u>	73165-1B

An article of transport equipment (lift-van, movable tank or other similar structure) with an internal volume of one cubic metre or more, which is: (a) of a permanent character and accordingly strong enough to be suitable for repeated use; (b) specially designed to facilitate the carriage of goods, by one or more modes of transport, without intermediate reloading; (c) fitted with devices permitting its ready handling, particularly its transfer from one mode of transport to another; and (d) so designed as to be easy to fill and empty. This item does not include vehicles of any kind or conventional packing. Metric tons and cubic metres.

3819-06	<u>Nails, screws, nuts, bolts, rivets, etc.</u>	69400-0
---------	---	---------

Nails, tacks, staples, hook-nails, corrugated nails, spiked cramps, studs, spikes and drawing-pins, bolts, nuts (including bolt ends and screw studs), whether or not threaded or tapped, screws (including screw hooks and screw rings), rivets, cotters, cotter pins, washers, and spring washers, of iron, steel or copper. Metric tons.

3819-07	<u>Stoves, ranges, cookers</u>	69710-1
---------	--------------------------------	---------

Kitchen stoves, ranges and cookers for household use and similar apparatus of larger size suitable for hotels, restaurants, etc., burning any type of fuel. Electrically-operated apparatus is excluded. Number.

3819-08	<u>Cables</u>	69510-0
---------	---------------	---------

Stranded wire, cables, cordage, ropes, plaited bands, strings and the like of iron and steel, copper or aluminium, but excluding insulated electric cables. Uninsulated stranded copper wire for electrical purposes is included. Metric tons.

3821-01A		71150-1A
3821-01B	<u>Engines, internal combustion, gasolene, under 10 HP</u>	71150-1B

See 3821-02. Number and horsepower.

3821-02A		71150-2A
3821-02B	<u>Engines, internal combustion, gasolene, 10 HP and over</u>	71150-2B

Spark-ignition, internal combustion, piston engines, equipped with fuel injection pumps; ignition parts; fuel and oil reservoirs; water radiators; oil coolers; water, oil and fuel pumps; blowers; air and oil filters; starting devices; etc. Automobile, bus, truck and aircraft engines are excluded. Number and horsepower.

3821-03A		71150-3A
3821-03B	<u>Engines, Diesel</u>	71150-3B

Compression-ignition engines (Diesel, semi-Diesel and other heavy oil engines). Diesel engines for trucks and buses are included. Number and horsepower.

ISIC-based code	Commodity	SITC-based code
-----------------	-----------	-----------------

III. Manufactures (continued)

3821-04A		71160-0A
3821-04B	<u>Gas turbines</u>	71160-0B

Turbines composed of a rotary compressor which compresses a considerable volume of air in a combustion chamber where it is heated to a high temperature by burners fed by gas or liquid fuel. The kinetic energy of the heated air and combustion gases acts on the blades of a rotor which drives the power shaft and also the compressor. Gas turbines for aircraft are excluded. Number and kilowatts.

3821-05A		71181-1A
3821-05B	<u>Hydraulic turbines</u>	71181-1B

Turbines consisting of a rotor encased in a stator which directs jets of water on to the blades of the rotor. There are three types of hydraulic turbines: the Pelton type, the Francis type and the Kaplan type. Regulators for water engines are also included. Number and kilowatts.

3821-06A		71192-1A
3821-06B	<u>Steam turbines</u>	71192-1B

Impulse turbines, reaction turbines and compound turbines. Mercury-vapour turbines are excluded. Steam piston-valve engines and parts of steam turbines are also excluded. Number and kilowatts.

3822-01	<u>Combine harvester-threshers, tractor-operated</u>	71220-1
---------	--	---------

Machines which successively reap, thresh, clean and bag the grain. Number.

3822-02	<u>Combine harvester-threshers, self-propelled</u>	71220-1
---------	--	---------

See 3822-01. Number.

3822-03	<u>Cultivators, scarifiers, etc., tractor-operated</u>	71210-1
---------	--	---------

Cultivators, scarifiers, weeders, hoes, and like machines usually consisting of a horizontal frame fitted with several rows of various types of tools (shares, discs, teeth, etc.) which may be rigid or springy, fixed or movable, and are sometimes interchangeable, used for working, weeding or smoothing the soil after ploughing or during the growth of the crops. Corn and cotton-type cultivators are excluded. Number.

3822-04	<u>Cultivators, scarifiers, etc., animal-operated</u>	71210-1
---------	---	---------

See 3822-03. Number.

3822-05	<u>Cultivators, etc., corn and cotton, tractor-operated</u>	71210-2
---------	---	---------

Tractor-operated cultivators and weeders for corn and cotton. Number.

3822-06	<u>Cultivators, etc., corn and cotton, animal-operated</u>	71210-2
---------	--	---------

Animal-operated cultivators and weeders for corn and cotton. Number.

3822-07	<u>Fertilizer distributors, tractor-operated</u>	71964-1
---------	--	---------

See 3822-09. Number.

3822-08	<u>Fertilizer distributors, animal-operated</u>	71964-1
---------	---	---------

See 3822-09. Number.

3822-09	<u>Fertilizer distributors, hand-operated</u>	71964-1
---------	---	---------

Distributors for spreading manure or solid fertilizers, usually consisting of long box hoppers mounted on wheels fitted with a distributing mechanism. Number.

ISIC-based code	Commodity	SITC-based code
III. Manufactures (continued)		
3822-10	<u>Harrows, rotary, tractor-operated</u>	71210-3
See 3822-11. Number.		
3822-11	<u>Harrows, rotary, animal-operated</u>	71210-3
Harrows are used for breaking up the soil after ploughing. Number.		
3822-12	<u>Mowers, tractor-operated and self-propelled</u>	71210-4
See 3822-13. Number.		
3822-13	<u>Mowers, animal-operated</u>	71210-4
Mowers for cutting hay, etc., consisting of a wheeled frame, supporting a horizontal cutter bar and a toothed knife. Number.		
3822-14	<u>Ploughs, disc, tractor-operated</u>	71210-5
See 3822-15. Number.		
3822-15	<u>Ploughs, disc, animal-operated</u>	71210-5
Ploughs which cut a furrow slice by means of sharp-edged steel discs, of saucer-like shape, set obliquely to the ground surface. Number.		
3822-16	<u>Ploughs, mouldboards, tractor-operated</u>	71210-6
See 3822-17. Number.		
3822-17	<u>Ploughs, mouldboards, animal-operated</u>	71210-6
Implement which by means of a coulter and a share detaches a slice of soil vertically from the undersoil. Number.		
3822-18	<u>Rakes, tractor-operated and self-propelled</u>	71210-7
See 3822-19. Number.		
3822-19	<u>Rakes, animal-operated</u>	71210-7
Tedder-rakes, windrower-rakes and bundling rakes. Number.		
3822-20	<u>Seeders, planters and transplanters, tractor-operated</u>	71210-8
See 3822-21. Number.		
3822-21	<u>Seeders, planters and transplanters, animal-operated</u>	71210-8
Boxes or hoppers mounted on wheels and fitted with devices for setting seeds. They may include devices for opening or recovering the furrow. Number.		
3822-22	<u>Threshing machines</u>	71220-2
Machines used in place of hand tools for threshing grain. They may be driven by a steam engine, tractor, etc. Number.		
3822-23	<u>Cream separators</u>	71231-0
Cream separators and centrifugal clarifiers for milk, hand or power operated. Number.		
3822-24	<u>Milking machines</u>	71239-1
Machines comprising a rust-proof milking pail with a special cover to which is fitted a pulsator for causing intermittent suction in the attached teat cup assembly. In the cases where the air pump for causing a cooperative vacuum in the milk pails forms an integral part of the pail, the whole unit (machine plus pump) is included under this heading. Number.		

ISIC-based code	Commodity	SITC-based code
III. Manufactures (continued)		
3822-25A		71250-1A
3822-25B	<u>Garden tractors</u>	71250-1B
Small tractors and mechanical cultivators developing less than 10 horsepower, used mainly for horticultural purposes. Motor tillers are included. Number and horsepower.		
3823-01	<u>Drilling and boring machines</u>	71510-1
Metal-working machines fitted with a baseplate, stand or other device for mounting on the floor, or on a bench, wall or another machine. Number.		
3823-02	<u>Grinding and sharpening machines</u>	71510-2
Metal-working grinding, filing and sharpening machines. Including machines for grinding metallic carbide or hard metal tool tips and machines with metal brushes and abrasives. Number.		
3823-03	<u>Lathes</u>	71510-3
Metal-working lathes of all kinds, whether or not automatic, including slide lathes, vertical lathes, capstan and turret lathes, production (or copying) lathes. Number.		
3823-04	<u>Milling machines</u>	71510-4
Metal-working machines designed to work a plane or profile surface by means of rotating tools, known as milling cutters. Number.		
3823-05	<u>Planing, shaping and slotting machines</u>	71510-5
Machines whose function is to remove metal. These machines are fitted with a baseplate, stand or other device for mounting on the floor or on a bench, wall or another machine. Number.		
3823-06	<u>Reaming machines</u>	71510-6
Metal-working machines; these further work the internal surface of an existing hole to exact dimensions. Number.		
3823-07	<u>Other metal-cutting machine-tools</u>	71510-7
Broaching; centring and dividing; sawing; gear cutting; engraving; polishing, lapping and honing machine-tools. Number.		
3823-08	<u>Extruding presses</u>	71510-8
Presses mainly for extruding soft metal in form of wire, bars and other shapes. Number.		
3823-09	<u>Forging, stamping and die-stamping machines</u>	71510-9
Mechanical, hydraulic, pneumatic and steam forge hammers and die-stamping hammers. Metal-working presses are excluded. Number.		
3823-10	<u>Metal-working presses</u>	71511-0
Mechanical, hydraulic and pneumatic presses used for forging, stamping, cutting out, etc. Forge hammers are excluded. Number.		
3823-11	<u>Swaging machines</u>	71511-1
Swaging machines in which tubes or bars are forced through rotating die to reduce the diameter without removing any metal. Number.		
3823-12	<u>Other metal-forming machine-tools</u>	71511-2
Other machine-tools for changing the shape or form of the metal without removing any of it, such as: riveting machines; bending and straightening machines; drawing machines; plate-working machines; shearing and notching machines; wire-drawing machines; thread-rolling machines. Number.		

ISIC-based code	Commodity	SITC-based code
-----------------	-----------	-----------------

III. Manufactures (continued)

5823-13	<u>Rolling mills for rolling metals</u>	71522-0
---------	---	---------

Hot and cold rolling-mill machinery designed for rolling out to reduce the thickness with the corresponding increase in length; rolling of blooms, billets, etc., to form a particular cross-section; rolling tubes; and rolling of wheel blanks or wheel-rim blanks. Number.

3823-14	<u>Machine-tools for working wood</u>	71952-0
---------	---------------------------------------	---------

Machines for shaping or surface-working wood (and also cork, bone, ebonite, plastic materials, etc.), generally power-driven and designed to be mounted on the floor, a bench or a wall, such as wood de-barking machinery; sawing machines; slicing and paring machines, planing, profiling, grooving, mortising and tenoning, drilling, sandpapering machines; lathes; machinery for the cooperage industry, etc. Tools for working in the hand, pneumatic or with self-contained electric or non-electric motor, are excluded. Number.

3824-01	<u>Looms</u>	71712-1
---------	--------------	---------

Machines for interlacing warp and weft yarns at right angles to form a fabric. They usually produce a flat fabric, but there are circular looms which produce a tubular fabric. Knitting machines and machines for making knotted net, tulle, braid, etc., are excluded. Number.

3824-02	<u>Spinning machines</u>	71711-1
---------	--------------------------	---------

Machines for working up the various textile fibres, after preparation or special preliminary treatment, into yarns; spinning frames, the essential feature of which is the spinning mechanism associated with a revolving vertical or oblique spindle; flax, hemp, jute, etc., spinning machines; intermittent spinning frames and continuous spinning frames for cotton, wool; throwing machines for twisting together continuous filaments of silk or of man-made textiles and "tow to yarn" machines (for breaking the filaments of the tow of synthetic or artificial continuous fibres, drawing out into a roving, and spinning into yarn). Machines for extruding man-made textiles in the form of monofilaments or of several filaments from a chemical composition forced through nozzles, and twisting and doubling machines for giving a supplementary torsion to yarns, are excluded. According to the type of machine, production should be expressed in terms of the number of spindles or the number of elements mounted side by side. Number of spindles.

3824-03	<u>Knitting machines</u>	71712-2
---------	--------------------------	---------

Flat and circular knitting machines. Small domestic knitting machines are excluded. Number.

3824-04	<u>Machines for extruding man-made fibres</u>	71711-2
---------	---	---------

Machinery for the manufacturing of continuous or discontinuous man-made fibres in the form of monofilaments. Staple fibre cutters, "tow-to-tow" machines and rupturing machines are also included. Number.

3824-05	<u>Sewing machines</u>	71730-0
---------	------------------------	---------

All types of sewing machines, whether operated by hand or fitted with a built-in electric motor, for household use or for industrial use (tailors, dressmakers, shoe industry, etc.). Number.

3824-06	<u>Machinery for making or finishing cellulosic pulp, etc.</u>	71811-1
---------	--	---------

Machines for making pulp from various cellulosic materials (wood, esparto, grass, straw, rags, waste paper, etc.). Including machinery for making paper or paper board; and machinery for finishing paper or paperboard ready for its various uses (that is, pulpmill machinery, papermill machinery, paper and paperboard converting equipment). Number.

3824-07	<u>Paper-cutting machines etc.</u>	71812-0
---------	------------------------------------	---------

This heading includes: paper-cutting and paper-trimming machines; slitter-reelers, stacking machines; machines for making envelopes, for die-cutting, for cutting or grooving paper, for folding, for making paper bags, for folding and gluing cartons and boxes, for stapling, for forming waxed paper cups, etc., and for moulding articles in paper pulp, paper or paperboard. Number.

ISIC-based code	Commodity	SITC-based code
-----------------	-----------	-----------------

III. Manufactures (continued)

3824-06	<u>Printing presses</u>	71822-1
---------	-------------------------	---------

Sheet- and roll-fed ordinary and platen presses; cylinder printing presses; and rotary presses, used industrially for typography, offset printing, photogravure or rotogravure. Number.

3824-09	<u>Glass bottle-making machines</u>	71852-1
---------	-------------------------------------	---------

Mechanical or automatic bottle-making machines. Number.

3824-10	<u>Concrete mixers for use at construction sites</u>	71851-1
---------	--	---------

Machines consisting essentially of a container, equipped with paddles or other stirring devices, for mixing concrete or mortar by stirring or agitation. The item is confined to mixers of the types used at construction sites. Mixers permanently mounted on a railway wagon or on a lorry chassis are excluded. Number.

3825-01	<u>Calculating machines</u>	71420-1
---------	-----------------------------	---------

Calculating machines involving a simple calculating device and usually designed to perform one or more of the four arithmetical operations. Excluding accounting machines and similar machines incorporating a calculating device. Number.

3825-02	<u>Typewriters</u>	71410-1
---------	--------------------	---------

Manual or electric typewriters except those incorporating calculating mechanisms. Excluding cheque-writing machines. Number.

3825-03	<u>Electronic data-processing machines</u>	71430-1
---------	--	---------

Digital and analog electronic computing equipment (with micromodules, integrated circuits, etc.). Number.

3825-04	<u>Other data-processing machines</u>	71430-2
---------	---------------------------------------	---------

Machines used in preparing punched cards and machines which use cards in order to extract, collate or tabulate information recorded on cards. Number.

3829-01A	<u>Air-conditioning machines</u>	71912-0A
3829-01B		71912-0B

Machines equipped with a motor-driven fan or blower, designed to change both the temperature and the humidity of air, self-contained on a common chassis or in a common housing. Number and horsepower per hour.

3829-02	<u>Refrigerators for household use</u>	71942-04
---------	--	----------

Refrigerators of the compression type or of the absorption type, of the sizes commonly used in private households. Insulated cabinets designed to contain an active refrigerating element (block ice) but no machine are excluded. SITC 71942 and 72501. Number.

3829-03	<u>Refrigerators (other than household) and freezers</u>	71915-0
---------	--	---------

Installations comprising a compressor, a condenser and an evaporator (or a generator and an evaporator not mounted on a common base or in the form of self-contained units, but as separate elements designed to operate together), used industrially for cold-storage plants and for manufacturing operations, for example, for the manufacture of block ice, for quick-freezing food products, etc. They may include associated cold brine circulation systems as well as ancillary apparatus such as freezing chambers or cold tables. Number.

3829-04	<u>Compressors</u>	71922-0
---------	--------------------	---------

Motor-driven air and gas compressors whether or not stationary which draw air at atmospheric pressure, compress it and deliver it at a higher pressure (that is, pumps, compressors, free-piston generators, and fans and blowers). Number.



ISIC-based code	Commodity	SITC-based code
-----------------	-----------	-----------------

III. Manufactures (continued)

3829-05	<u>Liquid elevators</u>	71921-1
---------	-------------------------	---------

Chain or cable elevators, Archimedean screw-type elevators, air lift pumps, as well as delivery pumps equipped with measuring or price-calculating mechanisms. Number.

3829-06	<u>Pumps, centrifugal</u>	71921-2
---------	---------------------------	---------

In these pumps the liquid is drawn into the centre of a rotating impeller, through which it flows radially under centrifugal force. The kinetic energy of the fluid is then converted into pressure energy in the casing. Number.

3829-07	<u>Pumps, ejector</u>	71921-3
---------	-----------------------	---------

In these pumps a high speed jet of air, steam or water emerging from a nozzle produces a suction effect on a liquid introduced around the periphery. Number.

3829-08	<u>Pumps, reciprocating, for liquids</u>	71921-4
---------	--	---------

Single- or double-acting pumps using the suction or forcing action of a piston or plunger driven within a cylinder. The inlet and outlet are regulated by valves. Including diaphragm pumps, "oil-cushion" pumps and hand-operated semi-rotary wing pumps. Number.

3829-09	<u>Pumps, rotary, for liquids</u>	71921-5
---------	-----------------------------------	---------

Vane pumps, gear pumps, rotary cam pumps and helicoidal gear pumps in which the intake and discharge of the liquid is effected by suction and compression produced by cams or similar devices, rotated continuously on an axis. Number.

3829-10A		71250-2A
3829-10B	<u>Tractors of 10 HP and over, other than road tractors</u>	71250-2B

Vehicles constructed essentially for hauling or pushing another vehicle, appliance or load, whether or not they contain subsidiary provision for the transport, in connexion with the main use of the tractor, of tools, seeds, fertilizers or other goods, etc., irrespective of their mode of propulsion (internal combustion engine, steam engine, etc.). This heading includes agricultural as well as other tractors, for example for use in forestry or in construction. Road tractors for tractor-trailer combinations are, however, excluded. Walking tractors, equipped with a single driving axle carried on one or two wheels, the steering of which is effected by means of two handles, used like normal tractors and possibly with interchangeable implements, are also included. Tractors of less than 10 horsepower ("garden tractors") are excluded. Number and horsepower.

3829-11A		71842-1A
3829-11B	<u>Bulldozers</u>	71842-1B

Machines with large blades mounted squarely in front of a tractor unit used to level or clear away excess soil, debris, etc.; angle dozers (or bull-graders) with blades mounted at an angle, and bulldozers designed for pushing down trees or for cutting through brush are included. Number and horsepower.

3829-12	<u>Cranes</u>	71931-1
---------	---------------	---------

Fixed or stationary and mobile cranes whether or not self-propelled such as tower cranes, balance cranes, jib or derrick cranes, etc. Cranes mounted on transport equipment are excluded. Number.

3829-13	<u>Excavating machines</u>	71842-2
---------	----------------------------	---------

Boom, jib and cable types which dig into the soil, above or below machine level, by means of an excavating bucket, grab, etc.; multi-bucket excavators in which the digging buckets are fitted on endless chains or on rotating wheels; dredgers (bucket or shovel type) other than floating dredgers; railroad ballast excavator-screening machines consisting essentially of a continuous chain of buckets which dig the ballast from under railway tracks. Number.

ISIC-based code	Commodity	SITC-based code
-----------------	-----------	-----------------

III. Manufactures (continued)

3829-14	<u>Fork-lift trucks</u>	71932-0
---------	-------------------------	---------

Mechanically-propelled vehicles, generally of small dimensions, used in workshops, mines, warehouses, docks, etc., for the handling of short-distance transport of luggage, parcels or other goods. They are not designed for the transport of passengers. Number.

3829-15	<u>Graders and levellers</u>	71842-3
---------	------------------------------	---------

Machines, usually self-propelled, designed for earth-levelling or smoothing (on flat surfaces or banks) by means of an adjustable grading blade, usually mounted within the wheel base. Number.

3829-16	<u>Elevators, for lifting goods and persons</u>	71931-2
---------	---	---------

Electric and hydraulic passenger and freight elevators. Automobile lifts, moving escalators, and other farm and non-farm elevators are excluded. Number.

3829-17	<u>Scrapers</u>	71842-4
---------	-----------------	---------

Machines incorporating a sharp cutting edge designed to slice off a layer of top soil which is then passed into the scraper body or discharged by a conveyor; scrapers with incorporated tractor are included. Number.

3829-18	<u>Drying machines for household use</u>	71715-1
---------	--	---------

Machines designed for the drying of textile fabrics or made-up articles consisting essentially of a closed chamber in which the goods to be dried are subjected to the action of hot air. Number.

3829-19	<u>Washing machines for household use</u>	71923-1+
---------	---	----------

These machines usually include electrically-driven paddles or rotating cylinders (for keeping the cleaning solution circulating through the fabrics) or alternative devices. Washing machines with attached wringers or centrifugal spin driers, and centrifugal spin driers designed as independent units, are included. Part of SITC 71923 and part of SITC 72502. Number.

3829-20A		71970-0A
3829-20B	<u>Ball, roller or needle bearings</u>	71970-0B

Bearings consist of two concentric rings enclosing balls or rollers and a cage which keeps them in place designed for both radial and thrust support. Parts such as polished steel balls, bearing balls, needles or rollers for bearings and rings, cages, fixing sleeves, are also included. Number and metric tons.

3831-01	<u>Arc-welding apparatus</u>	72992-1
---------	------------------------------	---------

Machines in which the source of heat is an electric arc struck either between two electrodes or between one such electrode and the work piece. Number.

3831-02	<u>Electric furnaces</u>	72992-2
---------	--------------------------	---------

Furnaces used for metallurgical and other purposes in which the heat is generated by (a) electric arc; (b) low-frequency or high-frequency electrical induction; or (c) electrical resistance. Number.

3831-03A		72210-1A
3831-03B	<u>Generators for steam turbines</u>	72210-1B

See 3831-04. Number and kilowatts.

3831-04A		72210-2A
3831-04B	<u>Generators for hydraulic turbines</u>	72210-2B

Machines which transform mechanical power into electrical energy. There are two main classes, direct-current generators (dynamos) and alternating-current generators (alternators). Dynamos used in conjunction with internal-combustion engines or for lighting or signalling equipment on motor vehicles or cycles are excluded. Prime movers associated with the generators are also excluded. Number and kilowatts.

ISIC-based code	Commodity	SITC-based code
-----------------	-----------	-----------------

III. Manufactures (continued)

3831-05A 3831-05B	<u>Motors, electric, fractional horsepower</u>	72210-5A 72210-5B
----------------------	--	----------------------

Machines which transform electrical energy into mechanical power in the form of rotary motion, having a capacity of less than one horsepower. Starter motors for internal-combustion engines are excluded. Number and kilowatts.

3831-06A 3831-06B	<u>Motors, electric, of one horsepower and over</u>	72210-4A 72210-4B
----------------------	---	----------------------

Machines which transform electrical energy into mechanical power in the form of rotary motion. Starter motors for internal-combustion engines are excluded. Number and kilowatts.

3831-07A 3831-07B	<u>Transformers over 5 kVA</u>	72210-5A 72210-5B
----------------------	--------------------------------	----------------------

See 3831-08. Number and kilovolt-amperes.

3831-08A 3831-08B	<u>Transformers less than 5 kVA</u>	72210-6A 72210-6B
----------------------	-------------------------------------	----------------------

Electrical appliances which, without any action of moving parts, transform an alternating current system into another system of alternating current of different voltage. Number and kilovolt-amperes.

3831-09	<u>Meters, electricity-supply</u>	72551-0
---------	-----------------------------------	---------

Meters for measuring the amount of electricity consumed (ampere-hours) or the amount of energy consumed (watt-hours). Apparatus such as voltmeters, ammeters and the like is excluded. Number.

3832-01	<u>Wireless receivers</u>	72420-0
---------	---------------------------	---------

Complete receiving sets, irrespective of frequencies covered, made for home, automobile and general use, including battery sets. Radio-gramophone combinations are included. Number.

3832-02	<u>Television sets</u>	72410-0
---------	------------------------	---------

Household television receivers of all kinds (table models, consoles, television sets incorporating a radio receiver or a gramophone). Number.

3832-03	<u>Sound recorders</u>	89111-2
---------	------------------------	---------

Groove type in which a stylus cuts a groove and magnetic type in which the recording-head is essentially an electro-magnet. Number.

3832-04	<u>Sound reproducers</u>	89111-1
---------	--------------------------	---------

Gramophones, record-players, automatic record changers, electric gramophones and magnetic sound reproducers. Number.

3832-05	<u>Communication equipment, fixed apparatus</u>	72499-1
---------	---	---------

Point-to-point radio communication equipment, such as receivers, transmitters, multiplexing and demodulating, of very low, low, medium and high frequencies. Portable apparatus is excluded. Number.

3832-06	<u>Picture telegraphic apparatus</u>	72491-1
---------	--------------------------------------	---------

Apparatus in which the transmission of still pictures over telegraph circuits is made by scanning and modulating a carrier, and subsequent reconstitution of the picture by synchronous scanning. Number.

3832-07	<u>Radiotelephony apparatus, mobile</u>	72499-2
---------	---	---------

Apparatus for motor vehicles, ships, aircraft, trains, etc. (transceivers, transmitters, receivers, etc.). Number.

ISIC-based code	Commodity	SITC-based code
-----------------	-----------	-----------------

III. Manufactures (continued)

3832-08	<u>Teletypewriter and teleprinter</u>	72491-2
---------	---------------------------------------	---------

A form of telegraph transmitter, having a typewriter keyboard and a type-printing telegraph receiver. Number.

3832-09	<u>Telephones</u>	72491-3
---------	-------------------	---------

Units composed of a microphone, one or more receivers, a switching device, a bell and possibly a dial selector. Number.

3832-10	<u>Electronic tubes</u>	72950-1
---------	-------------------------	---------

Valves and tubes which utilize the effect of electrons emitted from a cathode either in a vacuum or in gas. The envelopes are usually of glass, but sometimes of metal. Cathode-ray tubes and television camera tubes and photo-cathode valves and tubes are excluded. However, the modified form of cathode-ray tube which is used as a tuning indicator in wireless receivers (magic eyes) is included. Number.

3832-11	<u>Transistors</u>	72950-2
---------	--------------------	---------

Semi-conductor crystal, usually of germanium or silicon, and two junctions, usually in an envelope of glass or plastic material. Crystal diodes (crystal plus one junction) are included. Number.

3832-12	<u>X-ray apparatus</u>	72820-0
---------	------------------------	---------

Apparatus based on the use of X-rays or of the radiations from radio-active substances used in diagnosis (radioscopic apparatus, radiographic apparatus and radiophotographic apparatus); radio-therapy apparatus and X-ray apparatus for industrial use. Number.

3832-13	<u>Traffic lights</u>	72993-1
---------	-----------------------	---------

Automatic or hand-operated systems of coloured lights, or moving arms or discs, installed at cross-roads, junctions, stations, level crossings, etc. Number.

3832-14	<u>Gramophone records</u>	89120-1
---------	---------------------------	---------

Commercial records manufactured from shellac or resins mixed with inert materials (chalk, fine sand, slate powder, etc.) and colouring (animal black, etc.), or made from resins or other plastic materials (particularly in the case of micro-groove, long-playing or stereophonic records). Master records are excluded. Number.

3833-01	<u>Cookers, electric, household type</u>	72505-1
---------	--	---------

Domestic ovens of all types, including infra-red ovens and high-frequency induction ovens. Number.

3833-02	<u>Heaters, electric space</u>	72505-2
---------	--------------------------------	---------

Electric fires, including portable types with parabolic reflectors, sometimes with built-in fans; convection heaters; and electric heaters in which electric elements heat up oil which circulates in the radiator. Number.

3833-03	<u>Irons, electric smoothing</u>	72505-3
---------	----------------------------------	---------

Smoothing irons, whether for domestic use or for tailors, dressmakers, etc. Number.

3833-04	<u>Shavers and hair clippers, electric</u>	72504-0
---------	--	---------

Shavers and hair clippers which have a built-in electric motor, including those for shearing sheep or for grooming horses, clipping cattle, etc. Number.

ISIC-based code	Commodity	SITC-based code
-----------------	-----------	-----------------

III. Manufactures (continued)

3853-05	<u>Vacuum cleaners</u>	72503-1
---------	------------------------	---------

Vacuum cleaners of all types, including those with rotating brushes or carpet-beating devices and/or supplementary attachments. Number.

3839-01	<u>Accumulators (storage batteries) for motor vehicles</u>	79212-0
---------	--	---------

A battery composed of several cells connected together in series, each of which consists essentially of a container holding the electrolyte in which are immersed two electrodes. A chemical reaction can produce a direct current (discharging), and a direct current passing through the cell can regenerate it (charging). Number.

3839-02	<u>Batteries and cells, primary</u>	72911-0
---------	-------------------------------------	---------

A primary cell consists basically of a container holding a solid or a liquid electrolyte (ammonium chloride) in which are immersed two electrodes. Cells may be grouped together in batteries, either in series or in parallel or a combination of both. The various types of cells include dry cells, wet cells, inert cells and concentration cells. Number.

3839-03	<u>Lamps, electric</u>	72920-1
---------	------------------------	---------

Electric filament lamps of all shapes and wattages. Fluorescent tubes and special types of electric lamps are excluded. Number.

3839-04A	<u>Tubes, fluorescent</u>	72920-2A
3839-04B		72920-2B

Glass tubes in which a gas becomes luminous under the influence of an electric discharge, and the internal wall of which is coated with substances which transform ultra-violet rays into visible light. Number and metres.

3839-05	<u>Wire and cable, insulated</u>	72310-1
---------	----------------------------------	---------

Wire, cable, braids, bars, strips, etc. covered with an insulating material for use in conducting electric energy, whether or not covered with a metal sheath or fitted with connectors. Enamelled, lacquered or anodized wire and co-axial cable is included. Metric tons.

3839-06	<u>Fuses, electrical</u>	72220-1
---------	--------------------------	---------

Cartridge and socket-type non-renewable or renewable fuses for the protection of electrical circuits. Number.

3839-07	<u>Switches, electric</u>	72220-2
---------	---------------------------	---------

Apparatus for making and breaking electric circuits of single, double or triple poles. Number.

3839-08	<u>Electro-mechanical hand tools</u>	72960-0
---------	--------------------------------------	---------

Tools for working in the hand, with self-contained electric motor or vibrator. This heading excludes: portable mechanical tools permanently fitted with a baseplate, stand or other device for mounting on the wall, bench or floor; electrical lawn mowers; electro-mechanical domestic appliances; and electric shavers and hair clippers. Number.

3841-01A	<u>Sea-going bulk carriers, launched</u>	73530-1A
3841-01B		73530-1B

Vessels specialized for the transport of particular goods, such as grain, coal ores, etc., other than those specialized in the transport of liquids (tankers). Bulk carriers of 100 gross tons and over, Number and gross registered tons.

ISIC-based code	Commodity	SITC-based code
-----------------	-----------	-----------------

III. Manufactures (continued)

3841-02A	<u>Sea-going technical vessels, launched</u>	73530-2A
3841-02B		73530-2B

Cable ships, ice-breakers, floating factories of all kinds (for processing whales, preserving fish, etc.), whale catchers, trawlers and other fishing vessels, lifeboats, scientific research vessels, weather ships, vessels for the transportation and mooring of buoys, pilot-boats, etc., of 100 gross tons and over. Number and gross registered tons.

3841-03A	<u>Tankers, launched</u>	73530-3A
3841-03B		73530-3B

Merchant vessels specialized for the transport of liquids (petrol, wine), of 100 gross tons and over. Number and gross registered tons.

3841-04A	<u>Other sea-going merchant vessels, launched</u>	73530-4A
3841-04B		73530-4B

Passenger vessels, dry cargo vessels and combined cargo-passenger vessels, including refrigerator vessels of 100 gross tons and over. Tankers and bulk carriers are excluded. Number and gross registered tons.

3841-05A	<u>Inland-waterway propelled vessels, launched</u>	73530-5A
3841-05B		73530-5B

Propelled vessels having a minimum carrying capacity of 20 metric tons designed for the carriage of goods by inland waterways, such as self-propelled barges and self-propelled tankers. Tugs, pusher craft and ferry-boats are excluded. Number and metric tons carrying capacity.

3841-06A	<u>Inland-waterway non-propelled craft, launched</u>	73530-6A
3841-06B		73530-6B

Craft not having own mechanical propulsion, with a minimum carrying capacity of 20 tons such as barges, tankers, pontoons, etc. Number and metric tons carrying capacity.

General note relating to rolling stock

The following four items refer to the production of rolling stock delivered to the network of particular railway administrations, excluding the stock exclusively serving plantations, forests, mines or industrial plants.

3842-01A	<u>Locomotives, electric</u>	73120-1A
3842-01B		73120-1B

See 3842-02. Number and horsepower.

3842-02A	<u>Locomotives, Diesel</u>	73130-1A
3842-02B		73130-1B

A locomotive is a railway vehicle equipped with prime mover and motor or with motor only (electric locomotive) used for hauling railway vehicles. An electric locomotive is a locomotive with one or more electric motors, deriving current from overhead wires or conductor rails or from accumulators carried on the locomotive. A locomotive so equipped which also has an engine (Diesel or other) to supply current to the electric motor when it cannot be obtained from an overhead wire or from a conductor rail is classed as an electric locomotive. A Diesel locomotive is one in which the source of power is a Diesel engine, irrespective of the type of transmission installed. However, Diesel-electric locomotives equipped to derive power from an overhead wire or from a conductor rail are classed as electric locomotives. Number and horsepower.

3842-03A	<u>Rail motor passenger vehicles</u>	73140-1A
3842-03B		73140-1B

Motor vehicles constructed for the conveyance of passengers by rail, irrespective of the type of power equipment installed. This item includes rail motor vehicles consisting of several articulated vehicles forming an indivisible set; each of such sets is counted as one unit. Number and horsepower.

ISIC-based code	Commodity	SITC-based code	ISIC-based code	Commodity	SITC-based code
III. Manufactures (continued)			III. Manufactures (continued)		
3842-04	<u>Passenger carriages</u>	73150-1	3844-02	<u>Motor cycles, scooters, etc.</u>	73291-1
	Railway vehicles without power equipment intended for the conveyance of passengers, even if they comprise one or more compartments or spaces specially reserved for luggage, parcels, mail, etc. This item includes special vehicles for the conveyance of passengers, such as sleeping-cars, saloons, dining-cars and ambulance cars. Number.			Two-wheeled road motor vehicles with or without a side-car, and cycles with auxiliary engines exceeding 50 c.c.; motorized delivery tricycles are included, provided their unladen weight does not exceed 400 kilograms. Number.	
3842-05A		73150-2A+	3845-01	<u>Commercial passenger and cargo planes</u>	73410-1
3842-05B	<u>Goods wagons and vans</u>	73150-2B+		Commercial heavier-than-air aircraft which are designed for the transport of passengers or goods for civilian purposes. Helicopters are included. Number.	
	Goods wagons comprise all types of railway vehicles without power equipment, normally intended for the transport of goods. Vans are railway vehicles without power equipment, forming part of a passenger or freight train, used by train crews and possibly for the transport of luggage, mail, parcels, bicycles, etc. Freight-train vans (that is, vans used exclusively on freight trains) are included. Part of SITC 7315 and part of SITC 73162. Number and cubic metres carrying capacity.		3845-02	<u>Engines, internal-combustion, for aircraft</u>	71141-0
3843-01	<u>Passenger cars, produced</u>	73210-1		Engines of the general type described under "internal-combustion engines", but suitable by construction for propelling aircraft. So-called "composite engines" in which a normal internal combustion piston engine is combined with a gas turbine running on the exhaust gases are included. Number.	
	Three- or four-wheeled road motor vehicles, other than motor-cycle combinations, intended for the transport of passengers and seating not more than nine persons (including the driver), which are manufactured wholly or mainly from domestically-produced parts. Passenger cars shipped in "knocked-down" form for assembly abroad are included. Number.		3845-03	<u>Turbines, jet and gas, for aircraft</u>	71142-0
3843-02	<u>Passenger cars, assembled from imported parts</u>	73210-2		Engines composed of a compressor, a combustion system and a turbine in which the net gas energy is used solely for reaction propulsion through a propelling nozzle. Number.	
	Three- and four-wheeled road motor vehicles, other than motor-cycle combinations, intended for the transport of passengers and seating not more than nine persons (including the driver), which are assembled wholly or mainly from imported parts. Number.		3851-01	<u>Measuring and controlling instruments</u>	86196-0
3843-03	<u>Motor coaches and buses</u>	73220-0		Electrical, electronic and mechanical industrial instruments for measurement, display and control of process variables, such as hydrometers, thermometers, pyrometers, barometers, hygrometers, psychrometers, or combinations of these instruments. Number.	
	Passenger road motor vehicles (including trolley-buses) seating more than nine persons (including the driver). Seating capacity should be measured as the number of seats or berths, including the driver's, available in the vehicle when performing the service for which it is primarily intended. Number.		3851-02	<u>Scales, industrial</u>	71963-1
3843-04	<u>Lorries, including articulated vehicles</u>	73230-1		Machines for the direct determination of the weight of objects, such as floor scales, bulk material weighers, predetermined weighing and check-weighing scales, and miscellaneous industrial scales. Retail, commercial and household scales and balances are excluded. Number.	
	Road motor vehicles designed for the conveyance of goods, including vehicles specially equipped for the transport of certain goods. Articulated vehicles (that is, units made up of a road motor vehicle and a semi-trailer) are included. Ambulances, prison vans, and special purpose lorries and vans, such as fire-engines, are excluded. Number.		3851-05	<u>Scales, other than industrial</u>	71963-2
3843-05	<u>Road tractors for tractor-trailer combinations</u>	73250-0		Machines for the direct determination of the weight of objects such as retail and commercial scales, person-weighing scales and miscellaneous household scales. Number.	
	Road motor vehicles designed, exclusively or primarily, to haul other road vehicles. Number.		3851-04	<u>Syringes, hypodermic</u>	86171-1
3843-06	<u>Trailers and semi-trailers</u>	73350-1		Reusable and disposable hypodermic syringes of all kinds. Number.	
	Road vehicles for the conveyance of goods which are designed to be drawn by a road motor vehicle; semi-trailers are trailers without a front axle, which are coupled to the hauling vehicle in such a manner that part of the trailer rests on the tractor. Articulated vehicles are included in "Lorries". Number.		3852-01	<u>Binoculars and refracting telescopes</u>	86131-0
3843-07	<u>Engines, internal-combustion, for motor vehicles</u>	71150-3		Monocular or binocular instruments normally used for visual observation only, such as opera glasses; binoculars for touring or hunting; telescopes for hunting, touring, for use at sea; etc. Astronomical telescopes are excluded as well as telescopic sights for firearms, periscopes for submarines and telescopes for fitting to other instruments or apparatus. Number.	
	Internal-combustion piston engines for motor vehicles (passenger cars and commercial vehicles) equipped with cylinders, pistons, connecting-rods, crankshafts, flywheels, inlet and exhaust valves, etc. Number.		3852-02	<u>Optical and analytical instruments</u>	86134-0
3844-01	<u>Bicycles</u>	73311-1		Microprojectors, microscopes, photo-micrographic equipment and laboratory optical and related types of spectrometers. Number.	
	Two-wheeled road vehicles, fitted with pedals and using human energy as the sole means of propulsion. Number.		3852-03	<u>Cameras, cine</u>	86150-1
				Cameras equipped for taking a series of pictures in rapid succession. Number.	

ISIC-based code	Commodity	SITC-based code
III. Manufactures (continued)		
3852-04	<u>Cameras, still</u>	86140-1
All kinds of photographic cameras other than cine-cameras. Number.		
3853-01	<u>Watches</u>	86411-0
Pocket watches, wrist-watches and other watches including stop-watches Number.		
3853-02	<u>Clocks, with watch movements</u>	86412-0
Clocks equipped with movements regulated by a balance-wheel and hair-spring not more than 12 mm. in thickness, other than instrument-panel clocks or clocks of similar type. Number.		
3853-03	<u>Clocks, instrument-panel and similar type</u>	86421-0
Electric and non-electric clocks specially constructed for mounting on the instrument panels of vehicles, aircraft and ships. Chronographs are included. Number.		
3853-04	<u>Clocks, other non-electric</u>	86422-1
See 3853-06 for description. Number.		
3853-05	<u>Clocks, other electric</u>	86422-2
Clocks having movements other than watch movements, driven by weights, spring or electricity and generally controlled by a pendulum or a balance-wheel and hairspring. Instrument panel and similar-type clocks are excluded. Number.		
3902-01	<u>Musical instruments, string</u>	89142-0
Instruments in which sound vibrations are produced by running a bow across the strings or by plucking the strings. Pianos are excluded. Number.		
3902-02	<u>Musical instruments, wind</u>	89183-0
Wood and brass wind musical instruments, excluding organs and accordions. Number.		
3902-03	<u>Organs</u>	89181-0
Keyboard wind instruments with or without pipes (pipe and reed organs, harmonium and similar keyboard instruments and foot-blown accordions). Orchestrons, street organs and similar pipe instruments not fitted with a keyboard are excluded. Number.		
3902-04	<u>Pianos</u>	89141-1
Pianos of all types, including grand pianos and upright pianos, but excluding automatic pianos. Number.		
3909-01	<u>Dolls</u>	89422-0
Dolls made of rubber, artificial plastic materials, textile materials, wax, ceramic, wood, paperboard, papier maché or combinations of these materials. Toy metal soldiers and the like, as well as lay figures, are excluded. Number.		
3909-02	<u>Fountain pens, propelling pencils, etc.</u>	89521-0
Fountain pens, stylograph pens and pencils (including ball-point pens and pencils) and other pens, pen-holders, pencil-holders and similar holders, propelling pencils and sliding pencils. Mathematical drawing pens, pen nibs and nib-points, and pencil leads are excluded. Number.		
3909-03	<u>Pencils, crayons, etc.</u>	89525-0
Pencil leads, slate pencils, crayons and pastels, drawing charcoals, and writing and drawing chalks. Crude chalk and medical or cosmetic pencils are excluded. Number.		

ISIC-based code	Commodity	SITC-based code
III. Manufactures (continued)		
3909-04	<u>Slide fasteners</u>	89953-0
Zippers of any size and for any purpose (for clothing, footwear, travel goods, etc.). Number.		
IV. Electricity and gas		
4101-01	<u>Electric energy</u>	35100-0
Electric energy generated by both public supply undertakings (that is, undertakings, whatever their legal form, whose primary activity is the production, transmission and distribution of electric energy) and self-producers (that is, enterprises which, in addition to their main activities, themselves produce, individually or in common, electric energy intended in part or in its entirety to meet their own needs). Production is measured gross, that is, including station use and transmission losses. Kilowatthours.		
4102-01A		34120-1A
4102-01B	<u>Gas produced by cokeries</u>	34120-1B
Gas made in coke ovens or plants for the gasification of coal owned by industrial groups not dependent on gas undertakings proper, measured at 15° C and standard sea-level atmospheric pressure (760 mm. Hg.). Production should include gas consumed for heating furnaces and other internal uses by the producing establishment. Cubic metres and teracalories.		
4102-02A		31420-2A
4102-02B	<u>Gas produced by gas works</u>	31420-2B
Gas made by establishments belonging to undertakings, whatever their legal form, whose main purpose is the production of manufactured gas, measured at 15° C and standard sea-level atmospheric pressure (760 mm. Hg.). This item includes gas manufactured in coke ovens situated at gas works and municipal gas plants. Production should include gas consumed for heating furnaces and for other internal uses by the producing establishment. Cubic metres and teracalories.		
V. Waste products		
6100-01	<u>Scrap, iron and steel</u>	28200-0
Scrap of iron and steel fit only for the recovery of metal or for use in the manufacture of chemicals; usually takes the form of scrap and waste resulting from the cutting, shaping or other working of iron and steel, and unusable, worn-out and broken articles of iron and steel, frequently crushed or compressed together. Metric tons.		
6100-02	<u>Scrap, non-ferrous metal</u>	28400-0
Scrap and waste non-ferrous metal fit only for the recovery of metal or for use in the manufacture of chemicals. Metric tons.		
6100-03	<u>Paper waste and old paper</u>	25110-0
Waste paper, paperboard and scrap articles of paper or of paperboard, for use in paper-making. Metric tons.		

III. ADDENDUM

ISIC-based code	Commodity	SITC-based code
1110-55*	<u>Tobacco, prepared leaf</u> Leaves cured, stripped and cut to shape in agricultural establishments. Metric tons.	12100-2
1220-01*	<u>Pulpwood, other</u> Pulpwood residues, chips and particles derived from industrial establishments for pulping and manufacturing of fibreboard and particle board. Cubic metres.	24110-0
2200-03*	<u>Natural gasolene</u> Light spirit extracted from the natural gas associated with crude petroleum. Cubic metres.	33210-4
3117-01*	<u>Biscuits</u> Fine bakers' wares without leavening made from flour, sugar and shortening, usually crisp, dry and hard and in the form of small flat thin cakes, in terms of baked weight. Ships' biscuits, crisp bread, matzos and rusks are excluded. Metric tons.	04842-1
3140-04	<u>Tobacco, prepared leaf</u> Leaves cured, stripped and cut to shape in industrial establishments. Metric tons.	12100-3
3211-00	<u>Cotton linters</u> Short, stiff fibres (less than 5 mm. long) remaining on cotton seeds after removal of the long fibres and usually removed before the seeds are crushed. Metric tons.	26320-0
3411-06*	<u>Other paper and writing paper</u> Paper other than newsprint, which is suitable for use for printing and writing purposes in rolls and sheets, measured as the output of paper-making machines. Articles manufactured from printing and writing paper, such as stationery, exercise books, registers, etc. are excluded. Metric tons.	64120-0
3811-03	<u>Razor blades</u> Blades for safety razors. Number.	69603-1

The code numbers shown for these additional commodities are provisional and simply intended to indicate the position of the items in the basic list.